

# BOX12-V

Built-in hot / cold valves  
with fixed outlet socket  
Designer: John Pawson

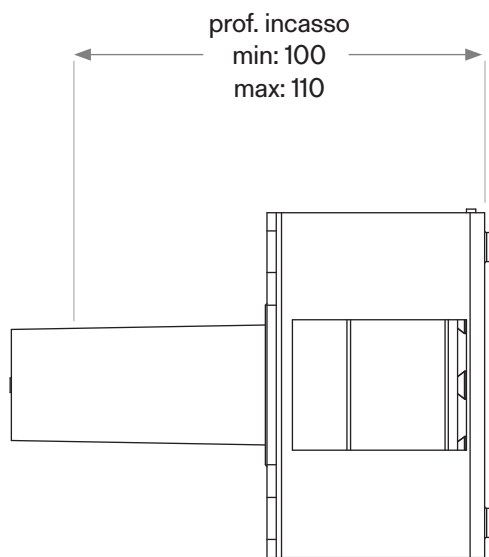
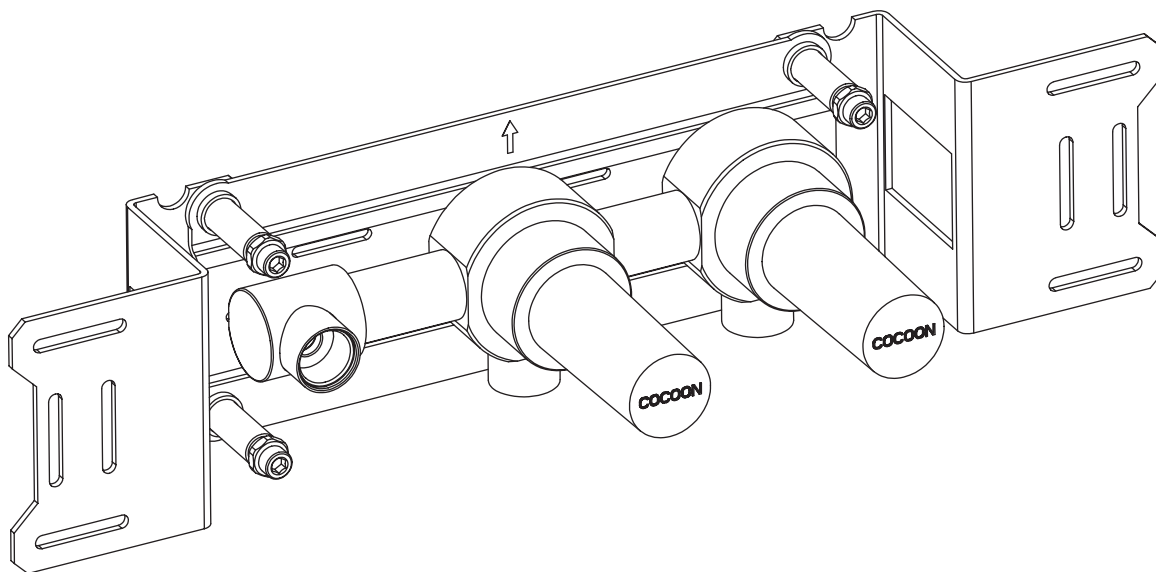


COCOON

1/2" connection to copper, steel, iron or pex pipe work

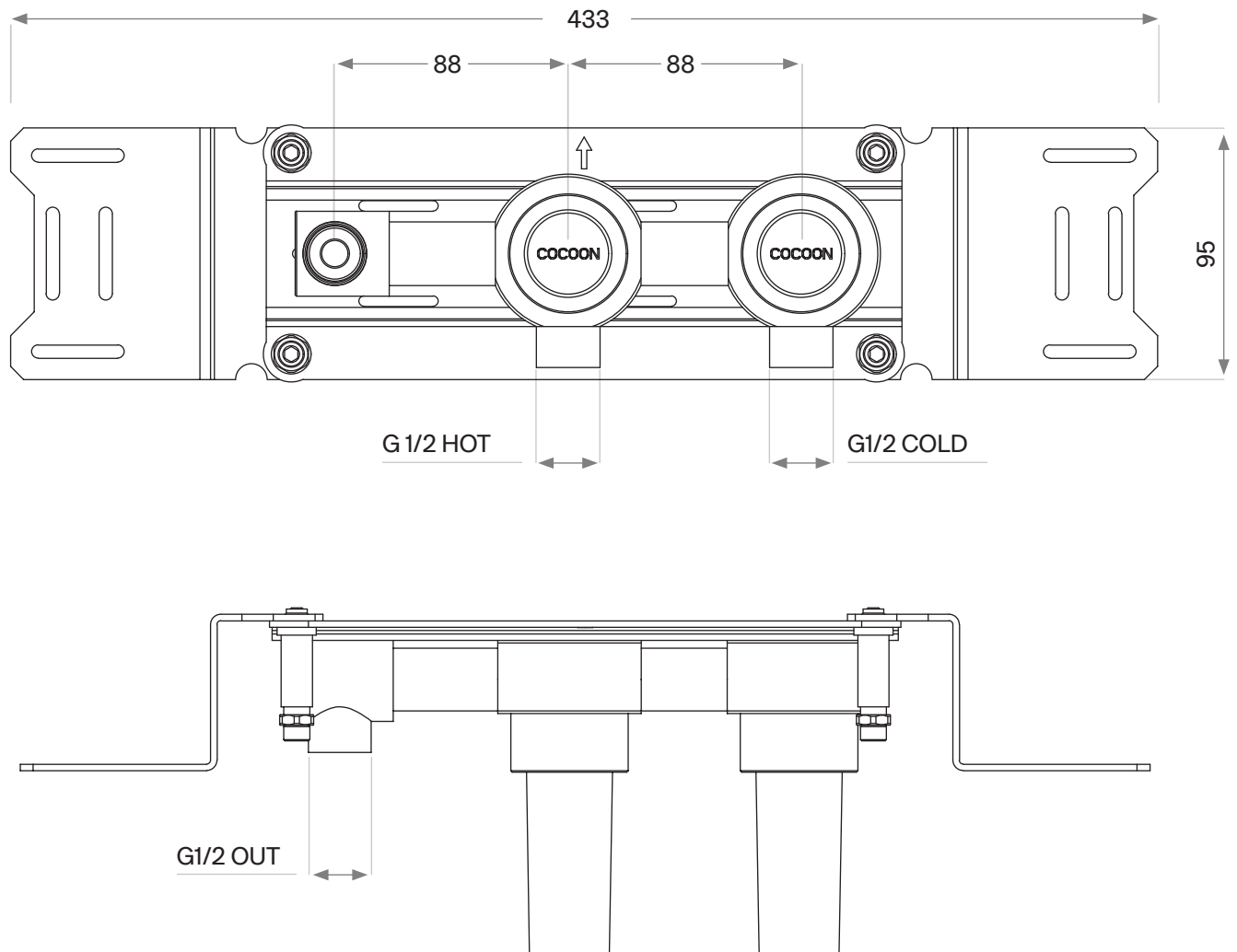
---

Dimensioned drawing 1/2



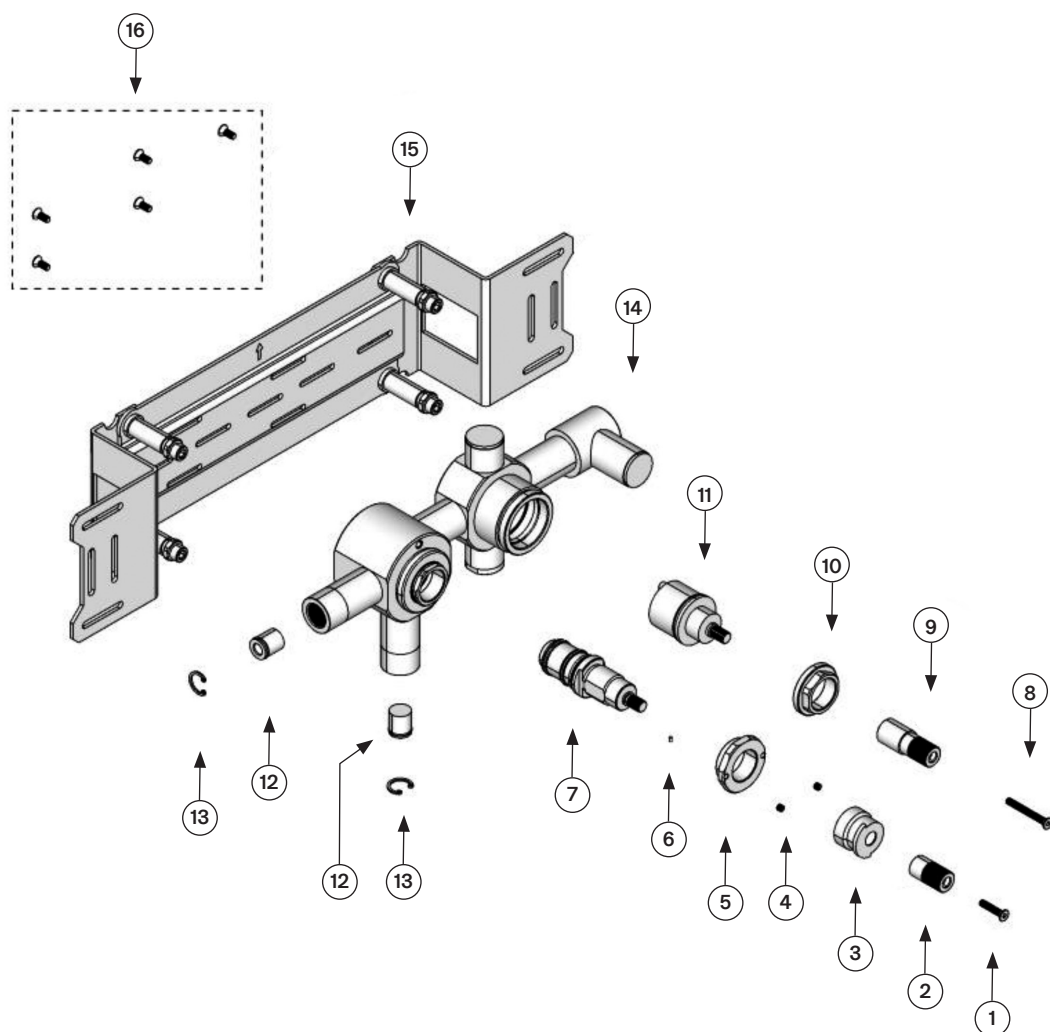
1/2" connection to copper, steel, iron or pex pipe work

## Dimensioned drawing 2/2

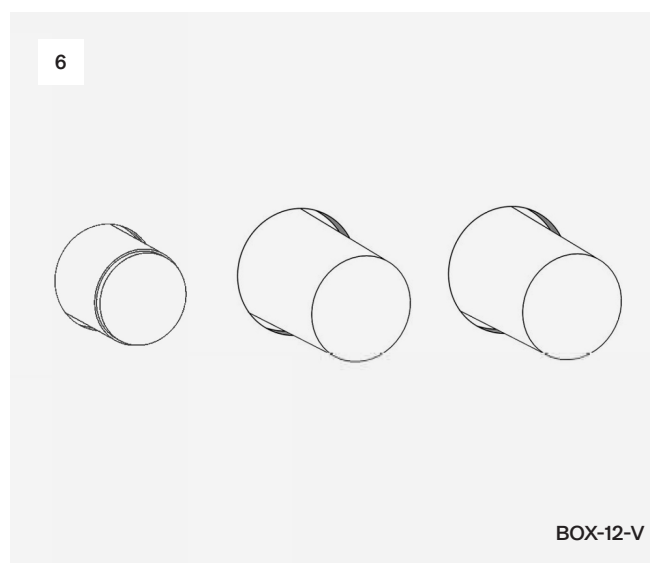
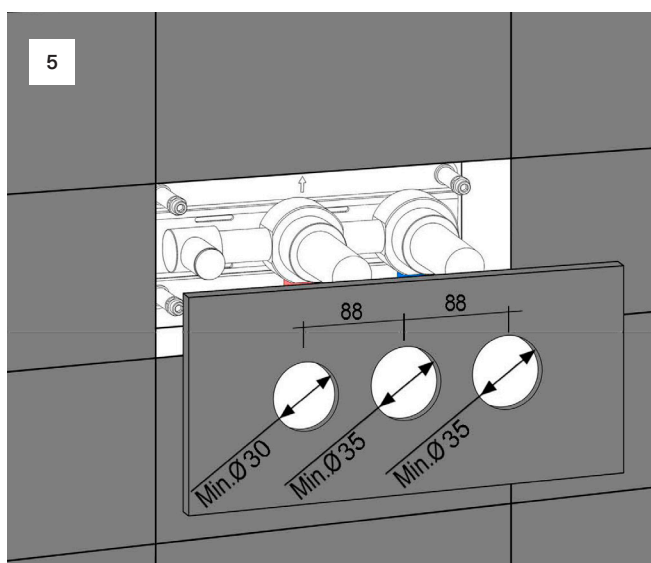
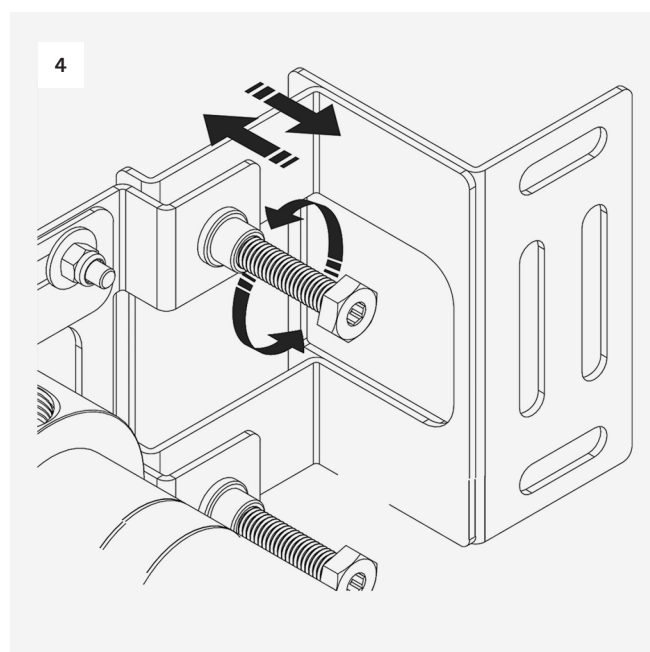
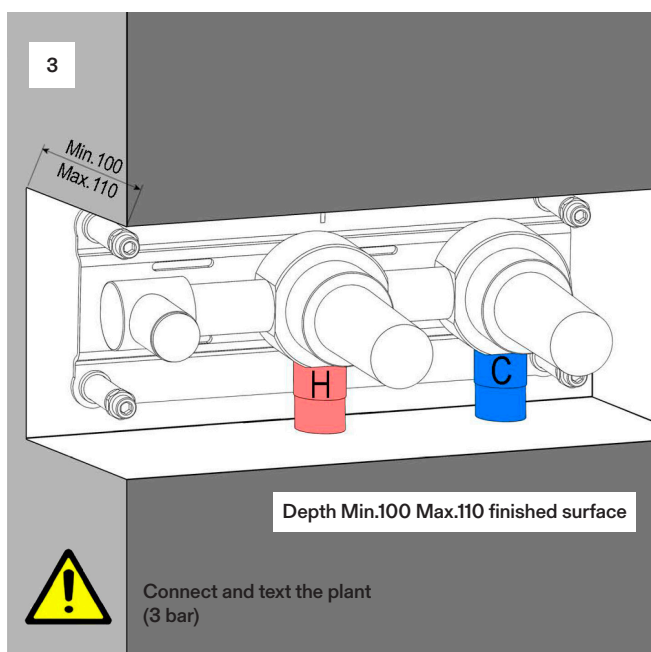
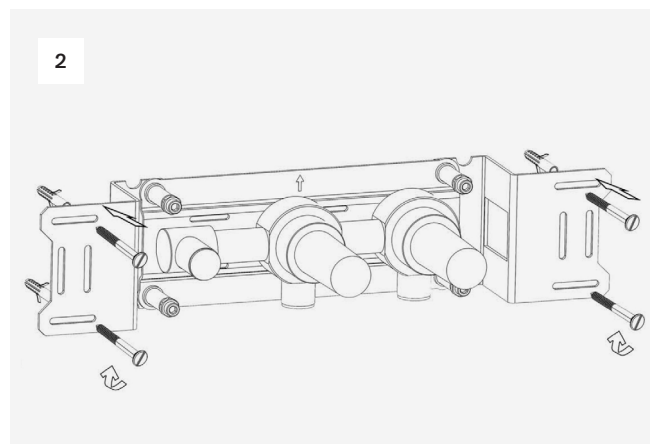
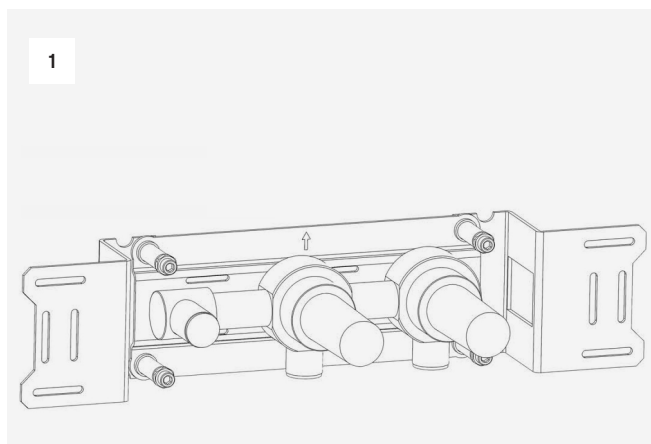


## Spare Parts List

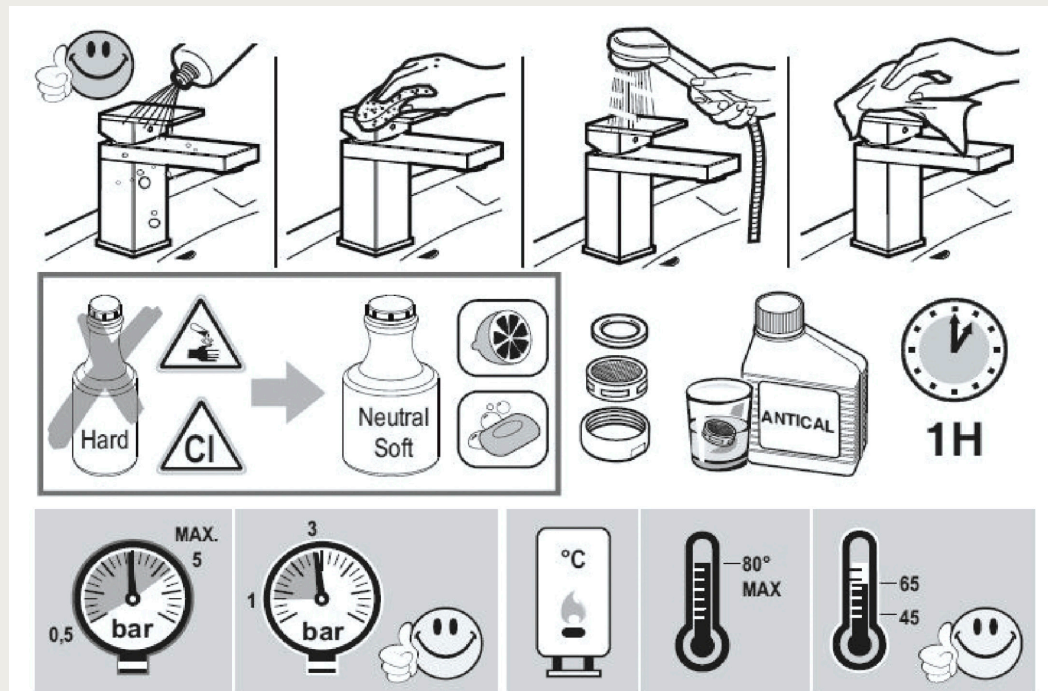
Part no	Spare part code	Article No	Description	QTY
1.	BOX12-V-001	BOX12-V-001.000	Grub Screw	2
2.	BOX12-V-002	BOX12-V-002.000	Spindle connection	2
3.	BOX12-V-003	BOX12-V-003.000	Valve housing	2
4.	BOX12-V-004	BFMC5400	Wall valve	2
5.	BOX12-V-005	BOX12-V-005.000	Built-in body	1
6.	BOX12-V-006	BOX12-V-006.000	Mounting frame	1
7.	BOX12-V-007	BOX12-V-007.000	Screw M6	4



## Installation Manual



BOX-12-V



## Please ensure you comply with the following instructions to optimise performance of the mixer:

- All pipework must be thoroughly flushed prior to installation
- For USA installation, please fix the USA NPT adapters on top of the pre-installed water connections
- Always first test the system with water pressure before closing the walls
- Optimal water pressure 3 BAR / temperature should not exceed 65°C/149°F
- Please read all installation instructions carefully

**Failure to comply with manufacturers recommendations will void warranty**