

# BOX-12-V-M-2024

Build in part for hot & cold valves  
with water outlet in the middle

Designer: John Pawson

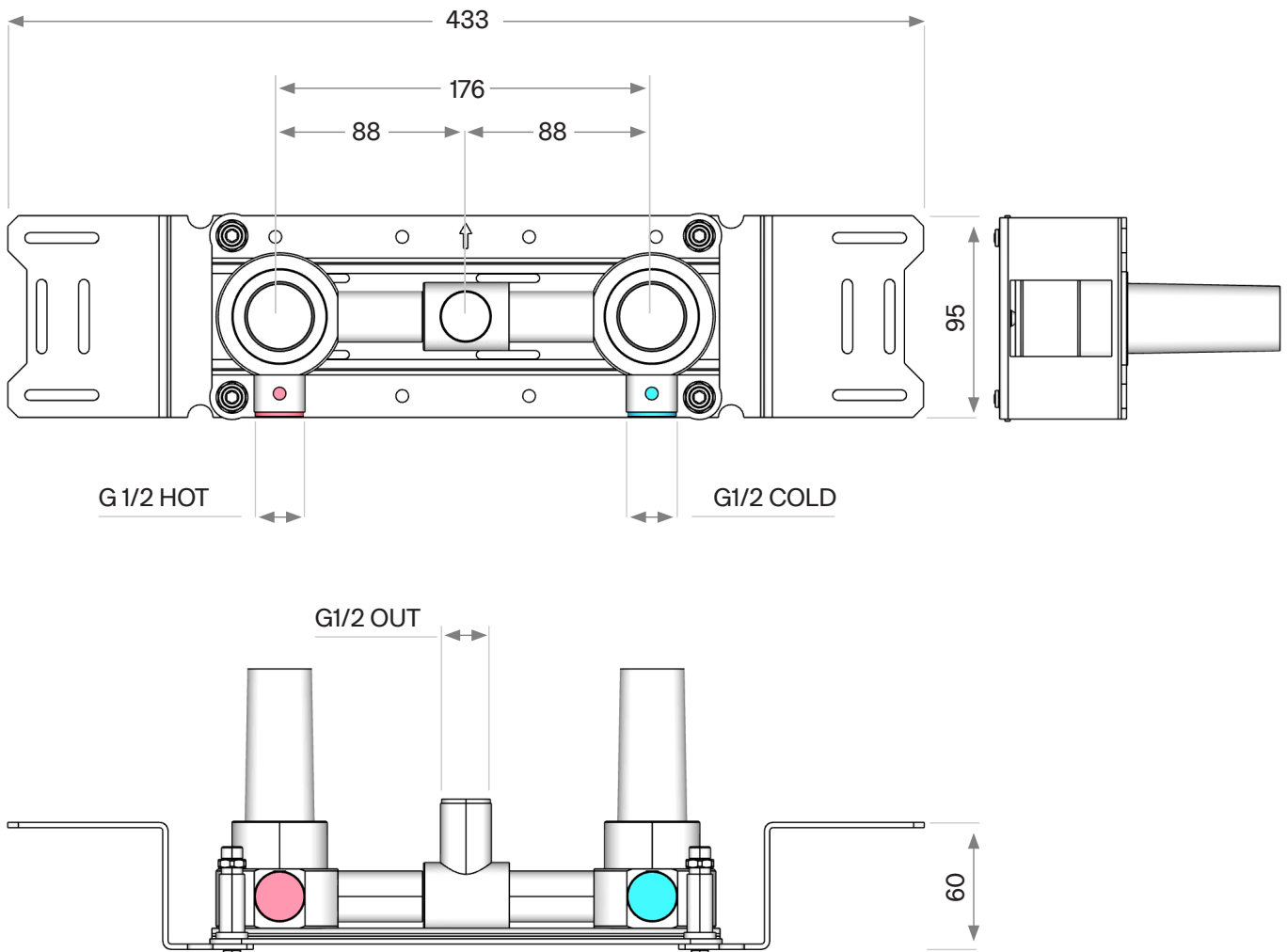
A large, dark gray circle containing the word "COCOON" in white, uppercase, sans-serif font.

COCOON

John Pawson  
Build in part for hot  
& cold valves with water  
outlet in the middle

# BOX-12-V-M-2024

## Dimensioned drawing



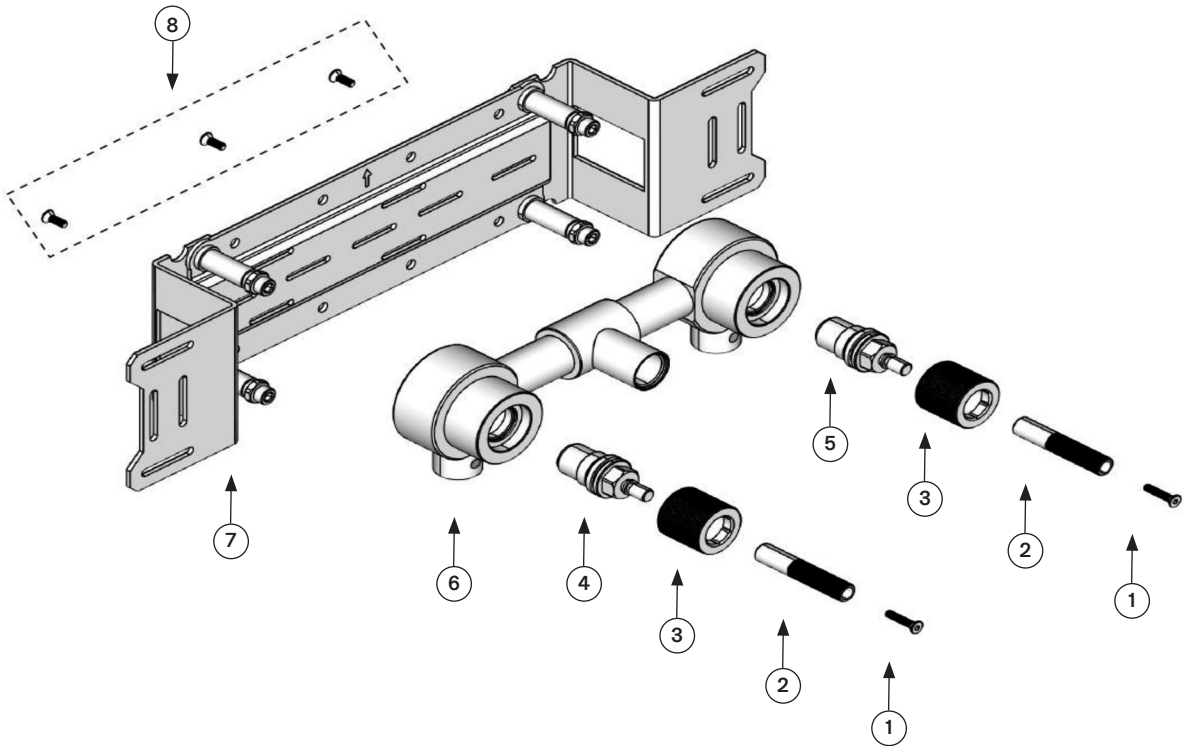
COCOON reserves the right to change  
designs, product range & technical  
specifications without prior notice.  
Further information can be found at  
[www.bycocoon.com](http://www.bycocoon.com)

John Pawson  
Build in part for hot  
& cold valves with water  
outlet in the middle

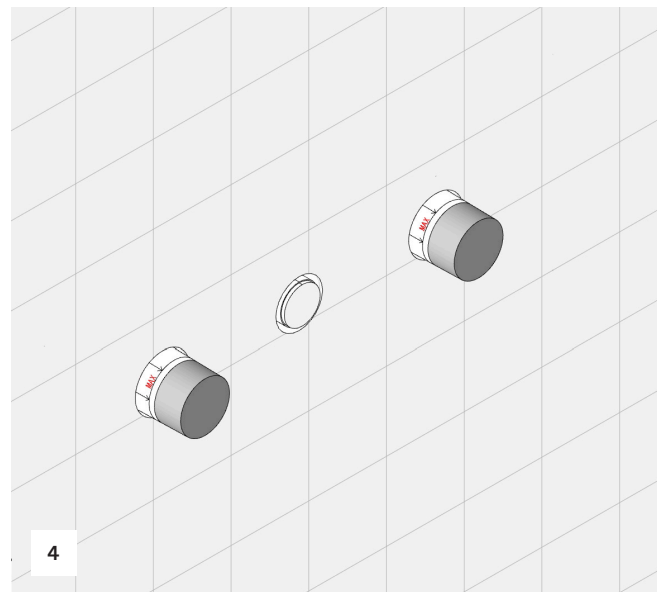
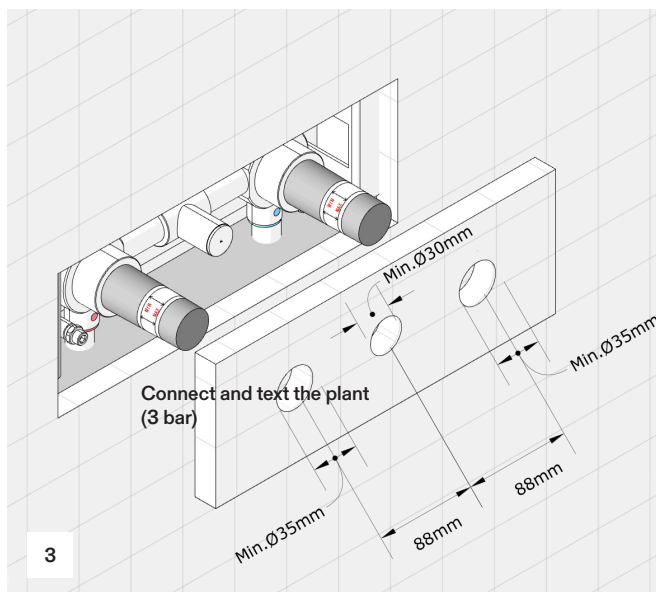
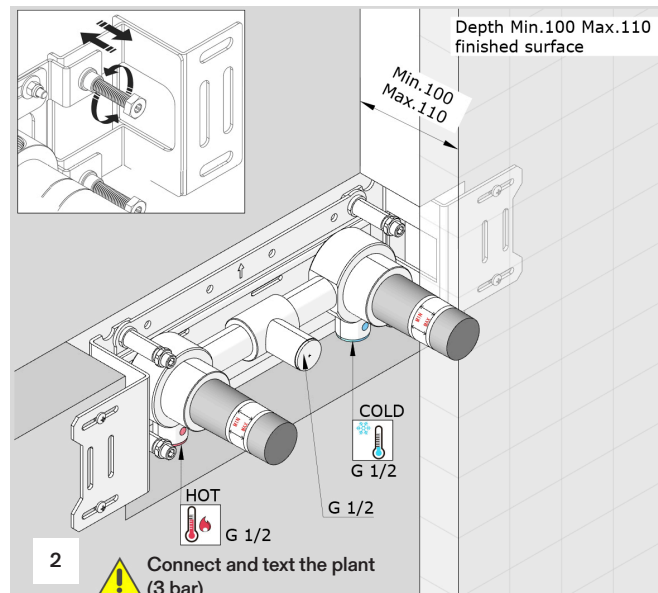
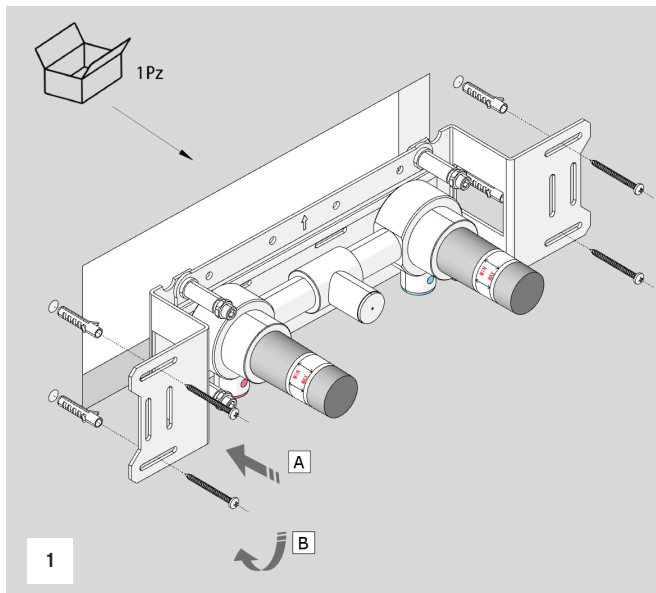
# BOX-12-V-M-2024

## Spare Parts List

Part no	Spare part code	Article No	Description	QTY
1.	BOX12-V-M-001	BOX12-V-M-001.000	Grub Screw	2
2.	BOX12-V-M-002	BOX12-V-M-002.000	Spindle connection	2
3.	BOX12-V-M-003	BOX12-V-M-003.000	Valve housing	2
4.	BOX12-V-M-004	BFMC5401	Wall valve (RTC)	1
5.	BOX12-V-M-005	BFMC5400	Wall valve (LTC)	1
6.	BOX12-V-M-006	BOX12-V-M-006.000	Built-in body	1
7.	BOX12-V-M-007	BOX12-V-M-007.000	Mounting frame	1
8.	BOX12-V-M-008	BOX12-V-M-008.000	Screw M6	4



## Installation Manual



## TECHNICAL WARNINGS

- Please read all the installation instructions before proceeding the piping work.
- The pipes have to be rinsed thoroughly to remove the debris before installation.
- Must make the first test the system with water pressure before closing the wall.
- Optimal water pressure at 3 BAR.
- Water temperature should not be used exceed 85°C.
- Failure to comply with manufacturer's recommendations could be voided the product warranty.