

BOX11-V

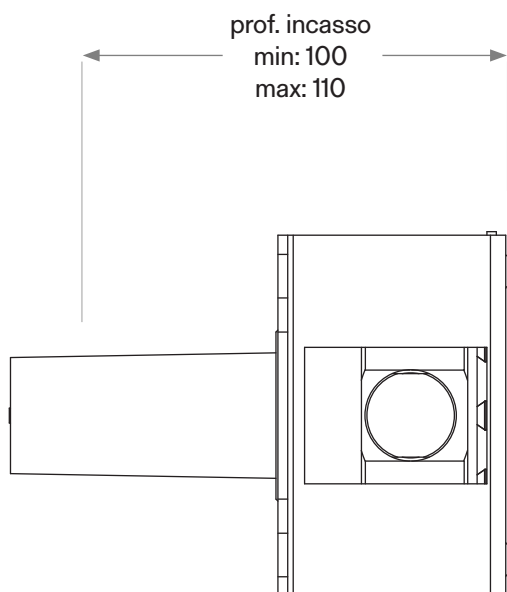
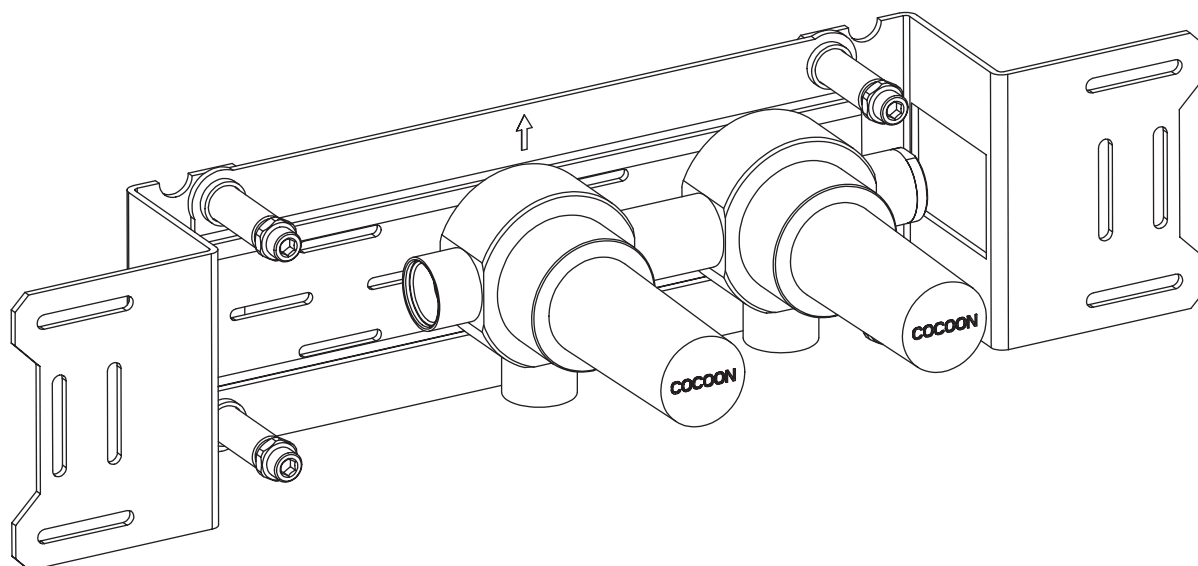
Built-in hot / cold valves mixer
Designer: John Pawson



COCOON

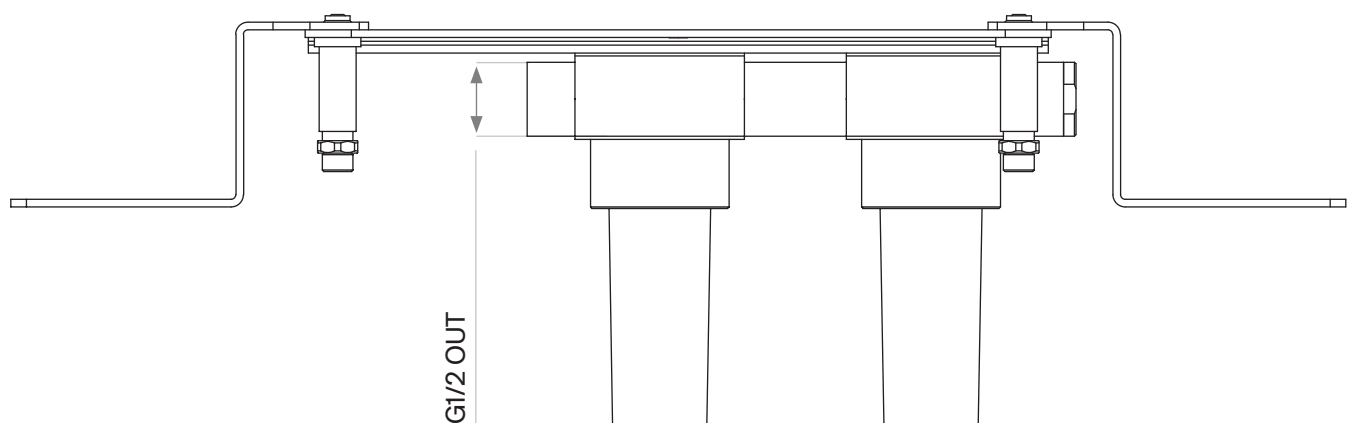
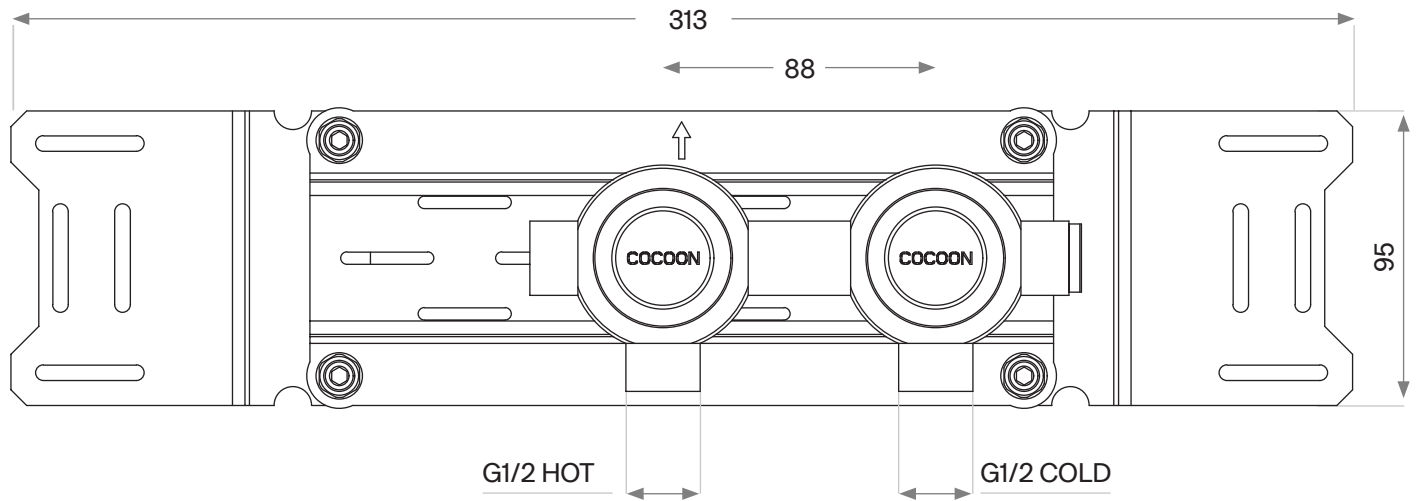
1/2" connection to copper, steel, iron or pex pipe work.

Dimensioned drawing 1/2



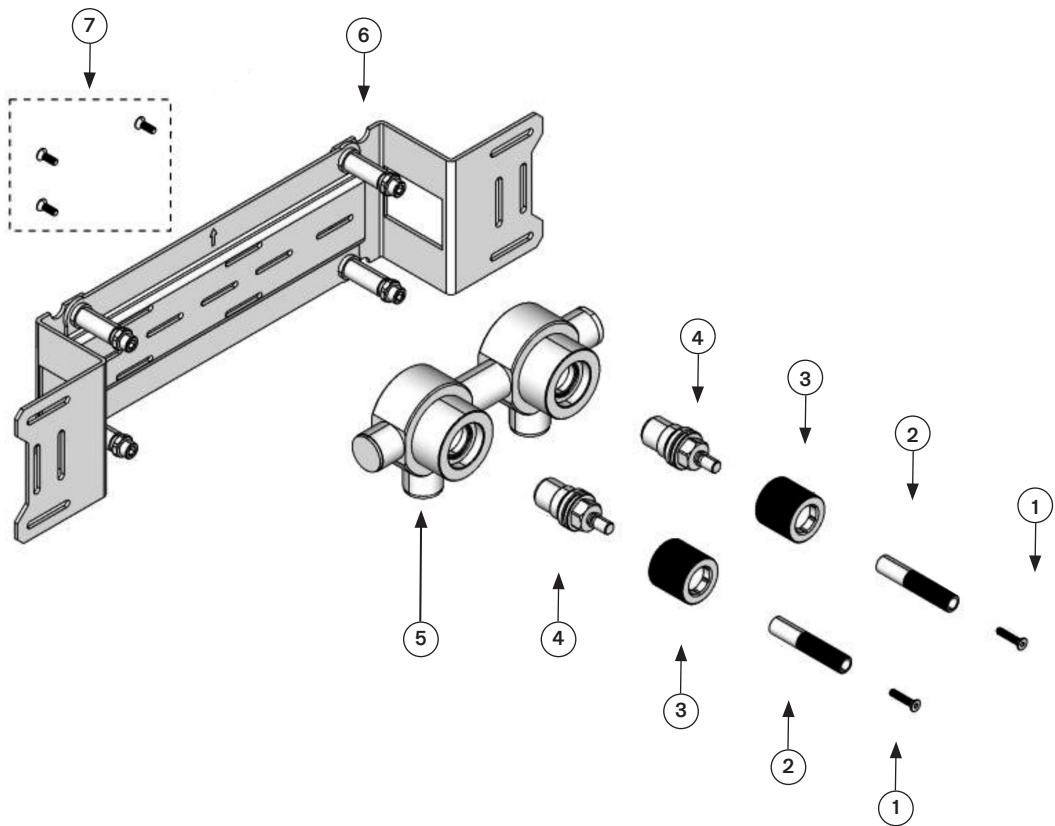
1/2" connection to copper, steel, iron or pex pipe work.

Dimensioned drawing 2/2

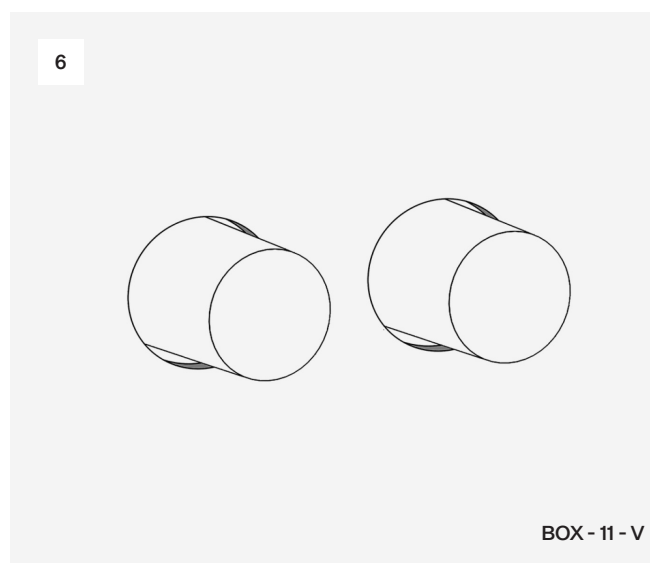
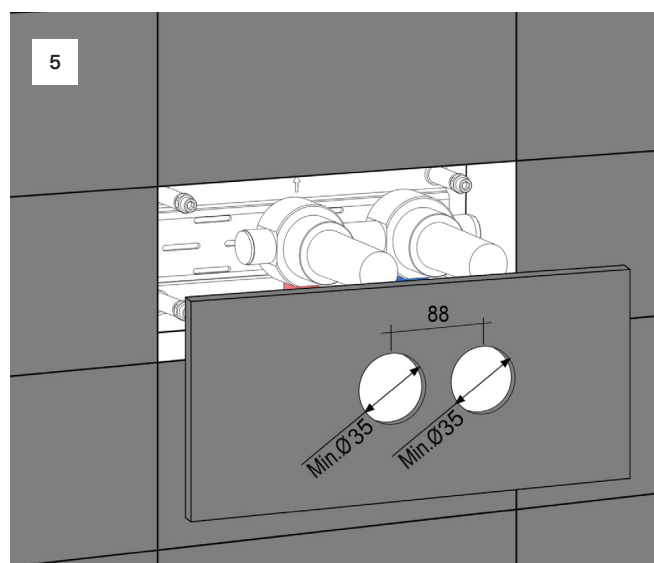
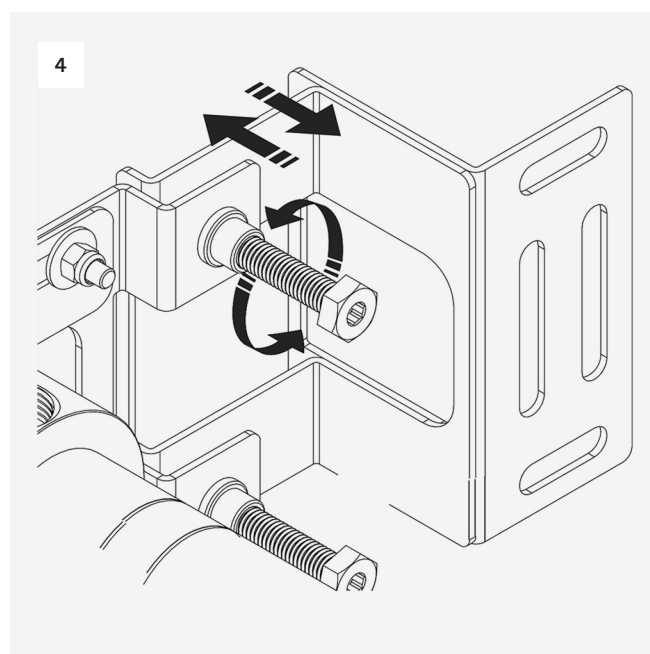
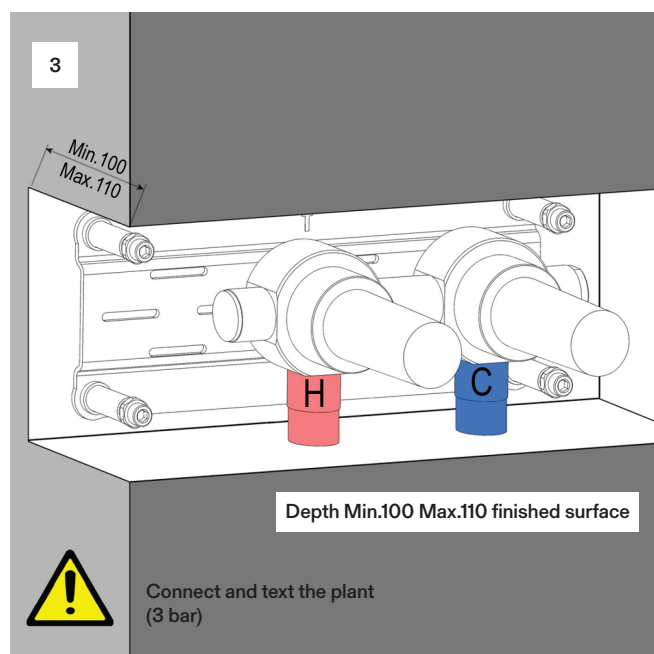
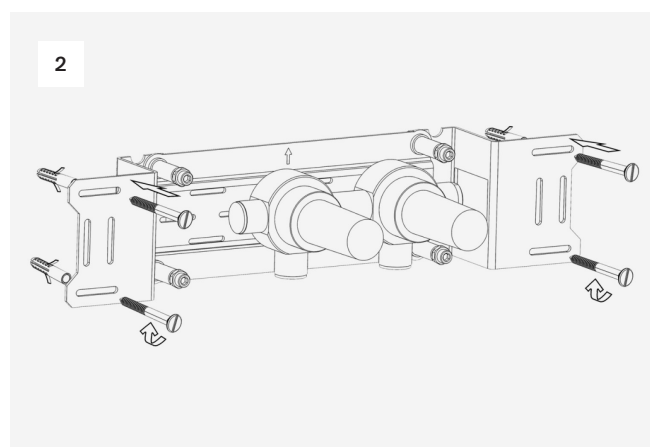
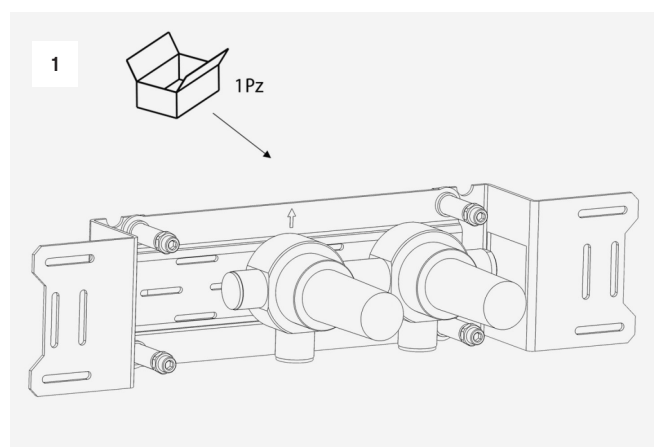


Spare Parts List

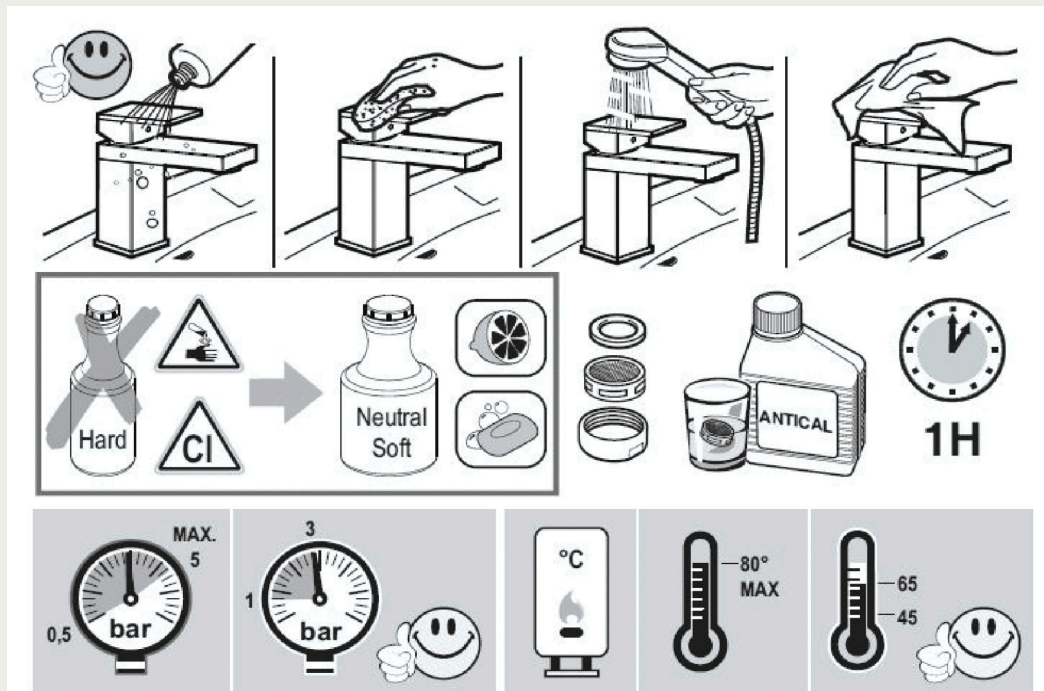
Part no	Spare part code	Article No	Description	QTY
1.	BOX11-V-001	BOX11-V-001.000	Grub Screw	2
2.	BOX11-V-002	BOX11-V-002.000	Spindle connection	2
3.	BOX11-V-003	BOX11-V-003.000	Valve housing	2
4.	BOX11-V-004	BFMC5400	Wall valve	2
5.	BOX11-V-005	BOX11-V-005.000	Built-in body	1
6.	BOX11-V-006	BOX11-V-006.000	Mounting frame	1
7.	BOX11-V-007	BOX11-V-007.000	Screw M6	3



Installation Manual



BOX - 11 - V



Please ensure you comply with the following instructions to optimise performance of the mixer:

- All pipework must be thoroughly flushed prior to installation
- For USA installation, please fix the USA NPT adapters on top of the pre-installed water connections
- Always first test the system with water pressure before closing the walls
- Optimal water pressure 3 BAR / temperature should not exceed 65°C/149°F
- Please read all installation instructions carefully

Failure to comply with manufacturers recommendations will void warranty