

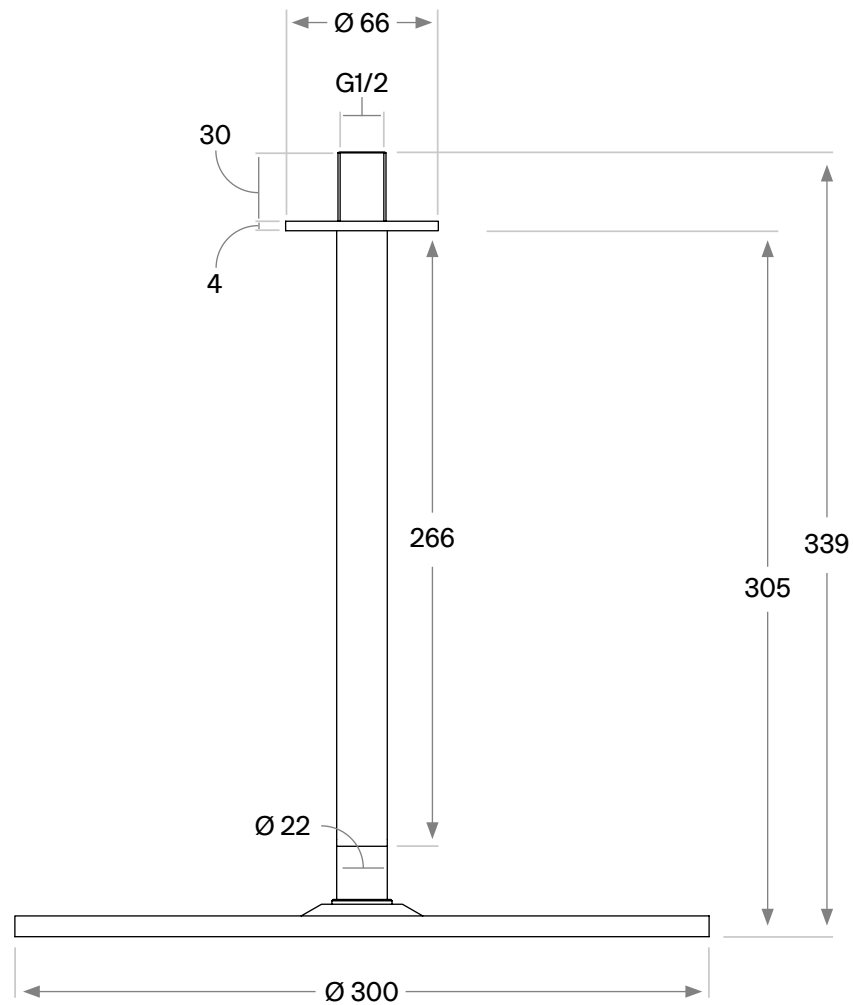
JP 31

Ceiling mounted rain shower head
Designer: John Pawson



1/2" connection to copper, steel, iron or pex pipe work

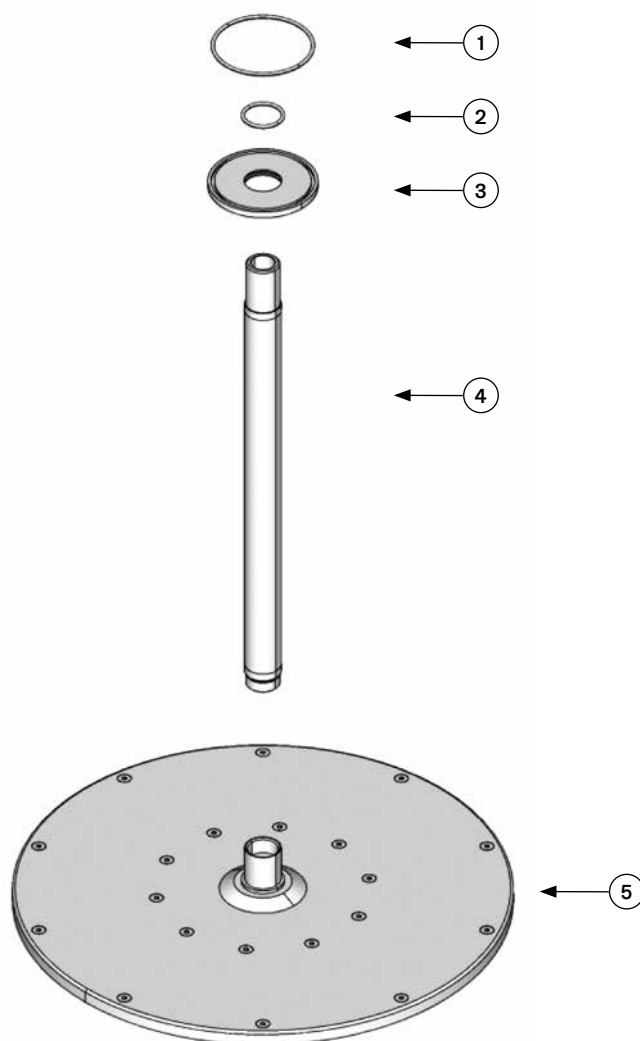
Dimensioned drawing



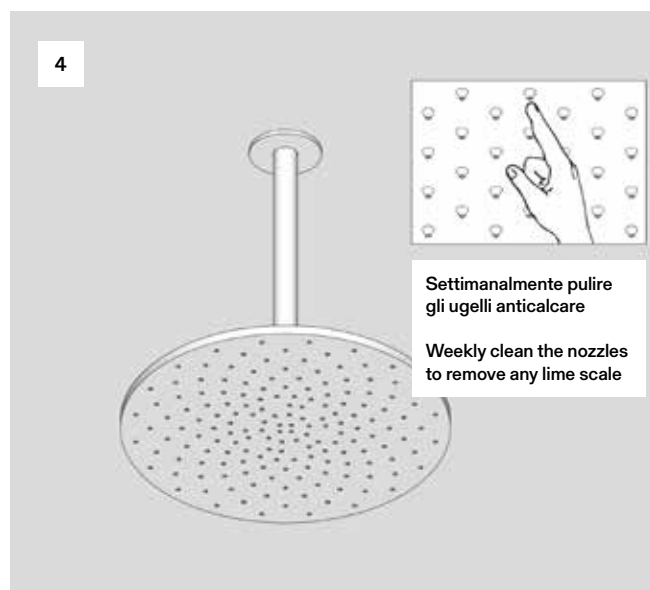
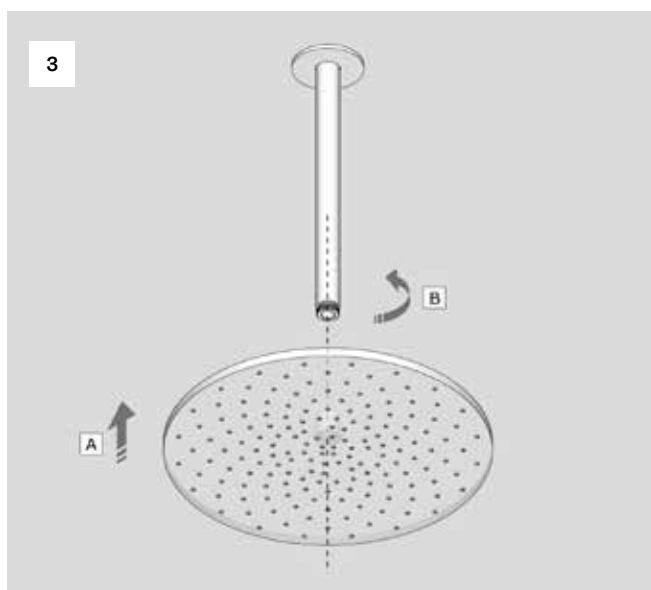
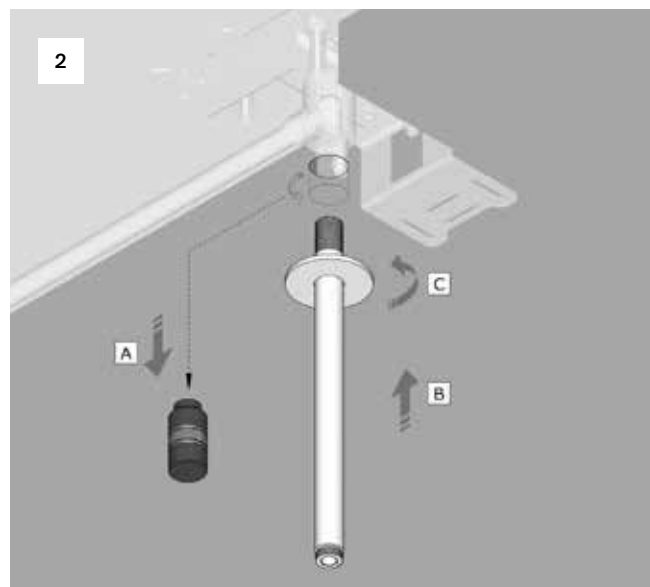
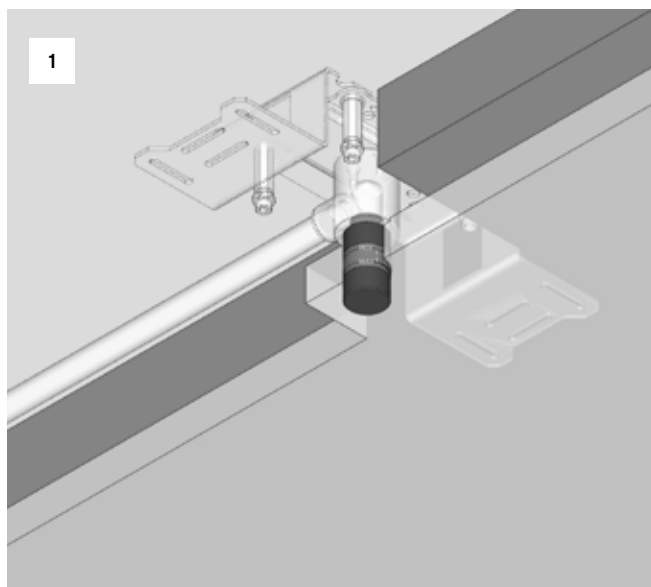
1/2" connection to copper, steel, iron or pex pipe work

Spare Parts List

Part no	Spare part code	Article No	Description	QTY
1.	JP31-001	70NBR103F	O ring Ø58 X 2	1
2.	JP31-002	70NBR103F	O ring Ø21.5 X 2	1
3.	JP31-003	JP31-003.000	Rosette	1
4.	JP31-004	JP31-004.000	Shower arm	1
5.	JP31-005	JP31-005.000	Round shower head	1



Installation Manual



Technical warning

The pipes have to be rinsed thoroughly before installation to avoid pressure differences.

Use of a pressure reducer when static pressure is higher than 5 bars to avoid damage to the cartridge.

AERATORE IN DOTAZIONE / AERATOR INCLUDED

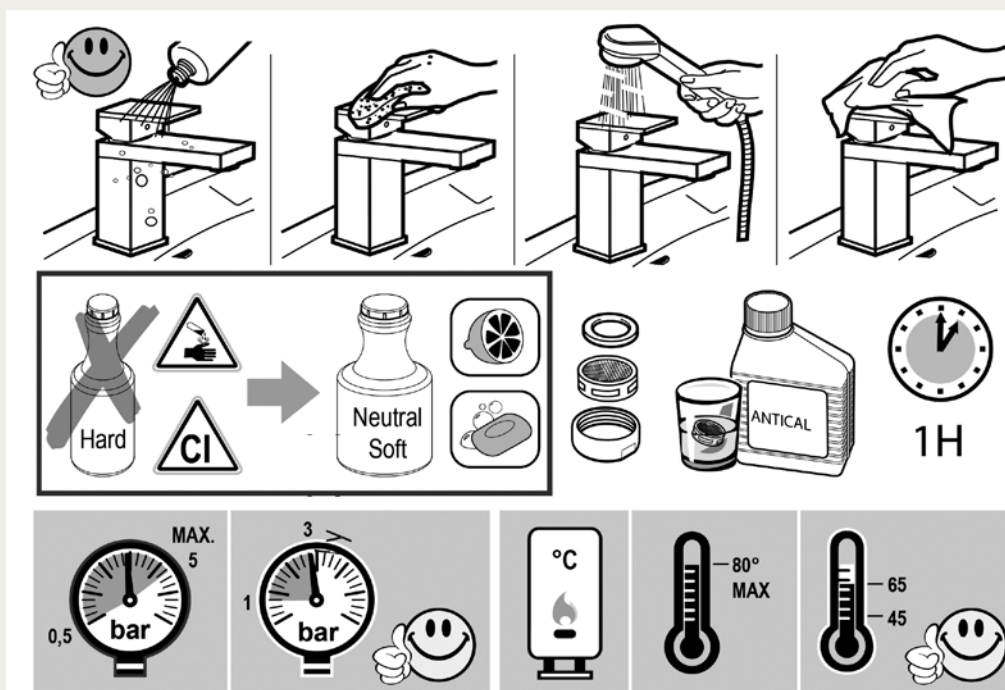
Aeratore montato / Mounted aerator

5.5 l/min / 1.2 gpm

TEMPERATURA DI ESERCIZIO / WORKING TEMPERATURE

max. 70 °C

max. 158 °F



Please ensure you comply with the following instructions to optimise performance of the mixer:

- All pipework must be thoroughly flushed prior to installation
- For USA installation, please fix the USA NPT adapters on top of the pre-installed water connections
- Always first test the system with water pressure before closing the walls
- Optimal water pressure 3 BAR / temperature should not exceed 65°C/149°F
- Please read all installation instructions carefully

Failure to comply with manufacturers recommendations will void warranty