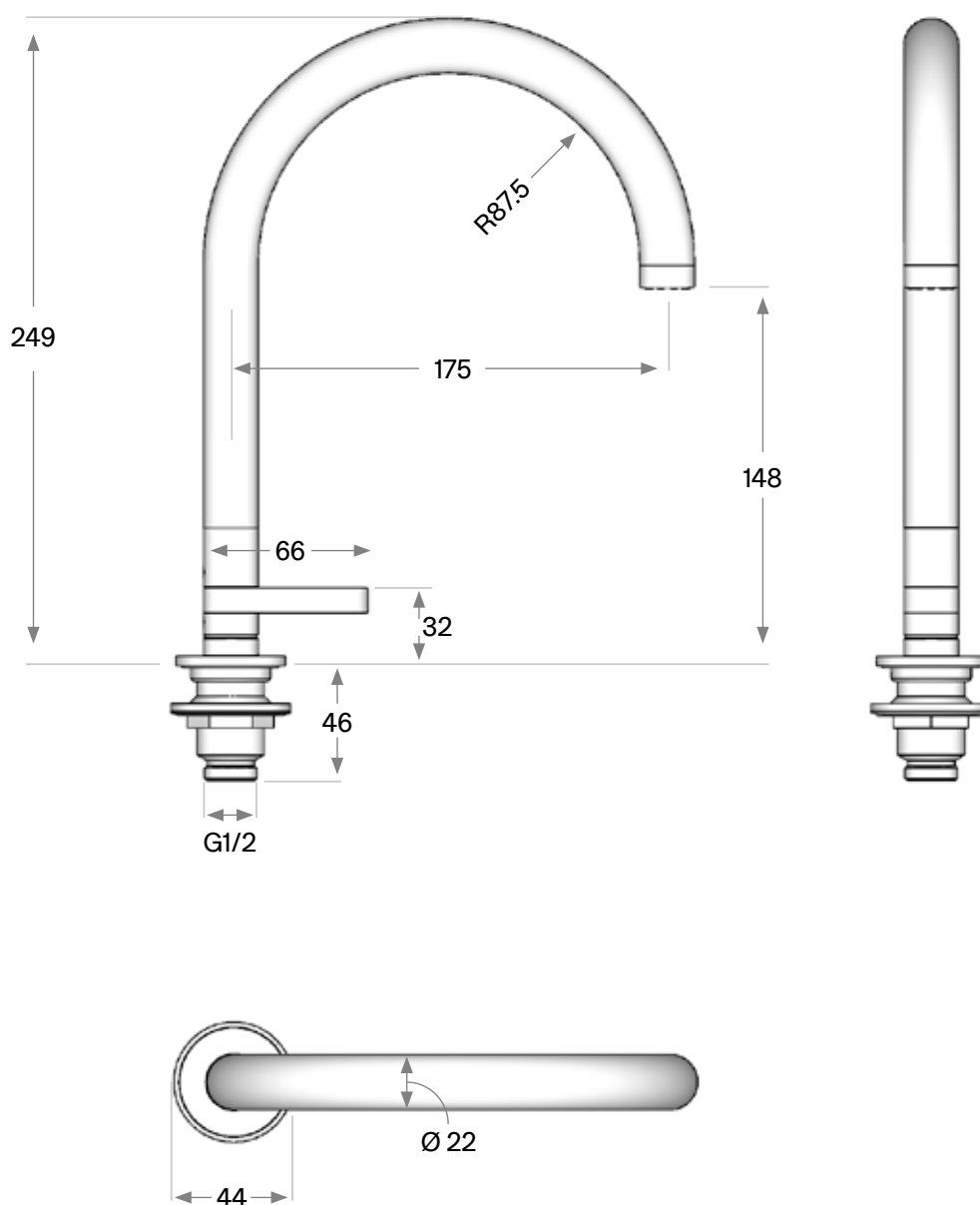


JP 16

Pillar tap with fixed spout
Designer: John Pawson



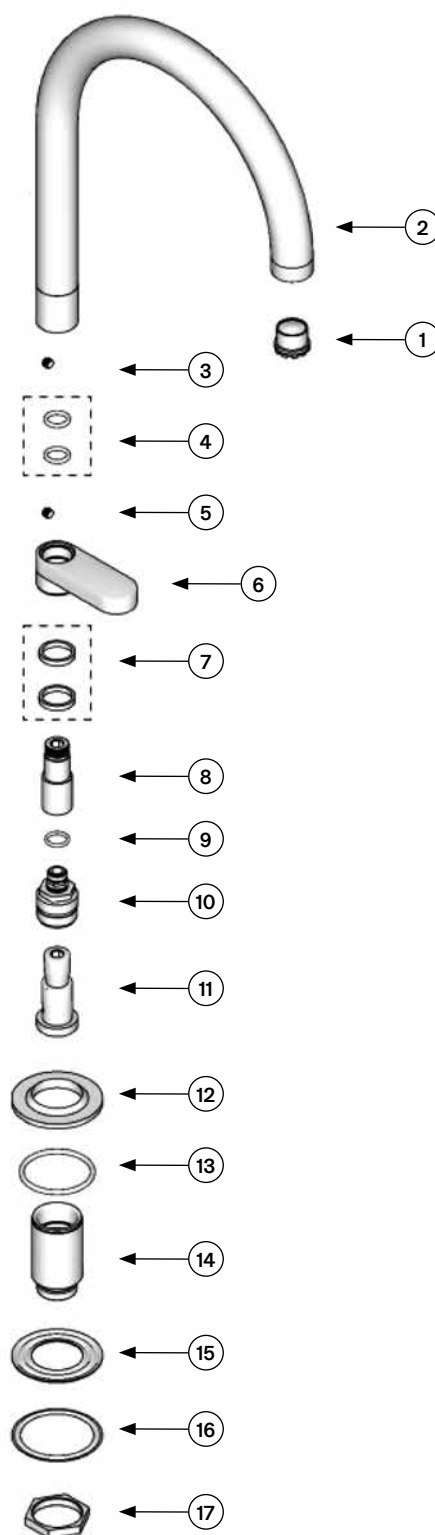
Dimensioned drawing



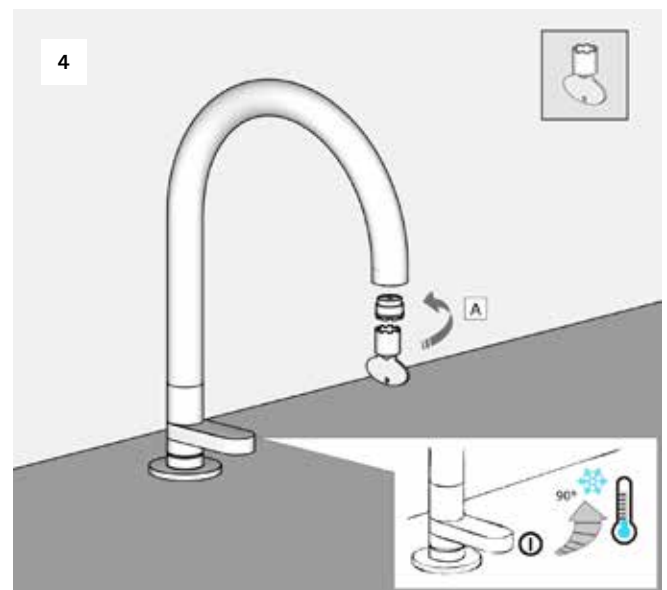
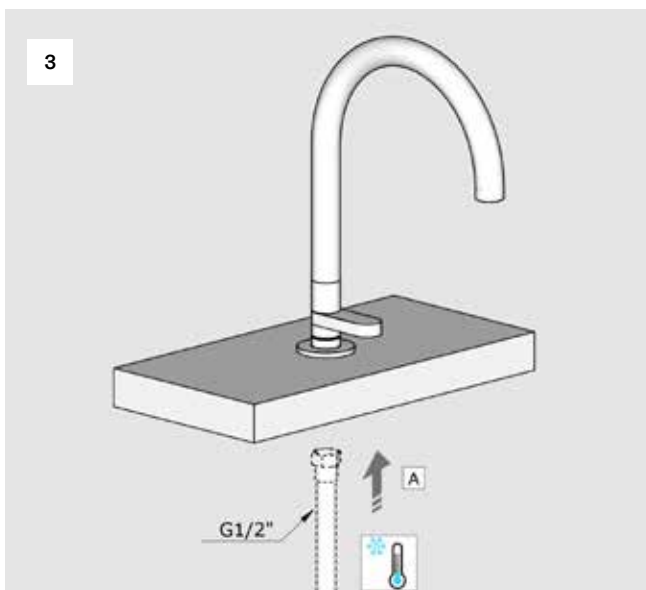
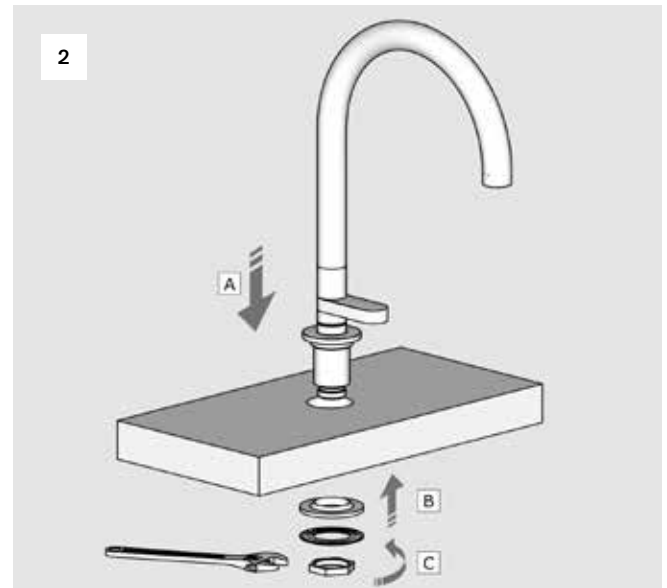
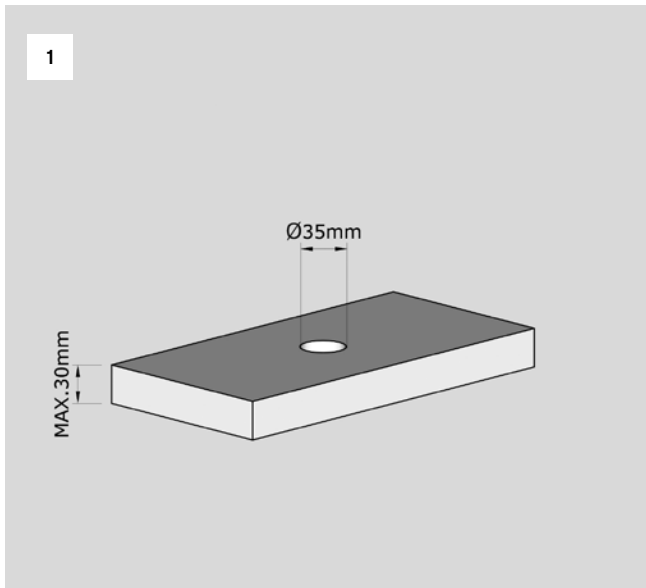
Spare Parts List 1/2

Part no	Spare part code	Article No	Description	QTY
1.	JP16-001	43225101001	Flow regulator M18.5	1
2.	JP16-002	JP16-002.000	Spout	1
3.	JP16-003	JP16-003.000	Pin	1
4.	JP16-004	70NBR103F	O ring Ø7.5 X1.5	2
5.	JP16-005	JP16-005.000	Dowel	1
6.	JP16-006	JP16-006.000	Handle	1
7.	JP16-007	70NBR103F	Gasket	1
8.	JP16-008	JP16-008.000	Spindle extension	1
9.	JP16-009	70NBR103F	O ring Ø8.5 X 1.8	1
10.	JP16-010	BF13708	Valve	1
11.	JP16-011	JP16-011.000	Plastic bushing	2
12.	JP16-012	JP16-012.000	Rosette	1
13.	JP16-013	70NBR103F	O ring Ø37 X 2	1
14.	JP16-014	JP16-014.000	Valve housing	1
15.	JP16-015	70NBR103F	Gasket	1
16.	JP16-016	JP16-016.000	Metal washer	1
17.	JP16-017	JP16-017.000	Hex. mounting ring	1

Spare Parts List 2/2



Installation Manual

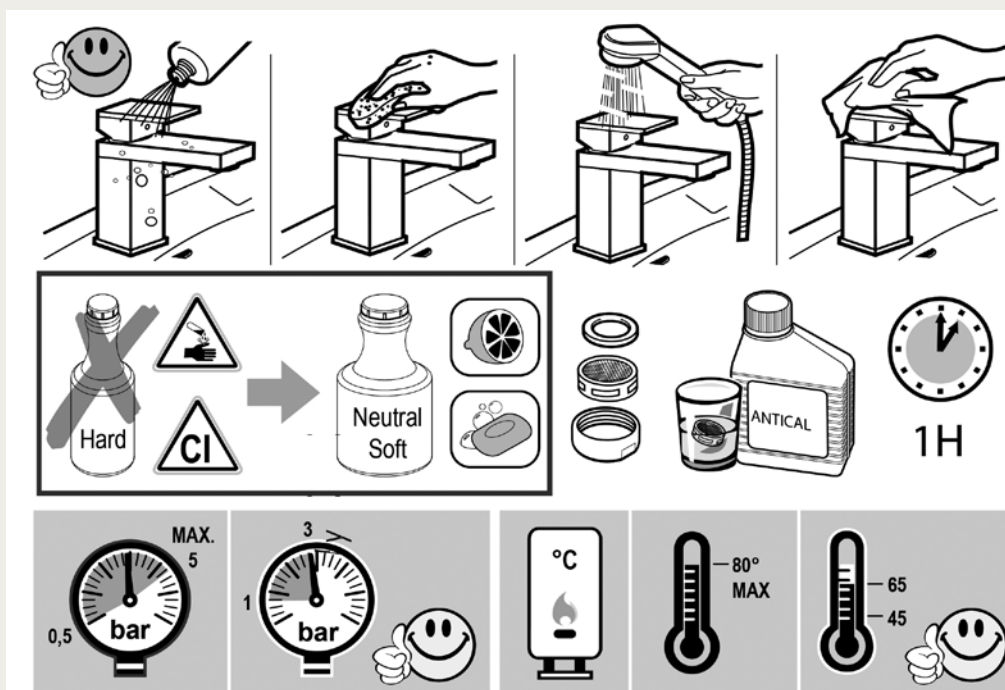


Technical warning

The pipes have to be rinsed thoroughly before installation to avoid pressure differences.

Use of a pressure reducer when static pressure is higher than 5 bars to avoid damage to the cartridge.

AERATORE IN DOTAZIONE / AERATOR INCLUDED
Aeratore montato / Mounted aerator
5.5 l/min / 1.2 gpm5



Please ensure you comply with the following instructions to optimise performance of the mixer:

- All pipework must be thoroughly flushed prior to installation
- For USA installation, please fix the USA NPT adapters on top of the pre-installed water connections
- Always first test the system with water pressure before closing the walls
- Optimal water pressure 3 BAR / temperature should not exceed 65°C/149°F
- Please read all installation instructions carefully

Failure to comply with manufacturers recommendations will void warranty