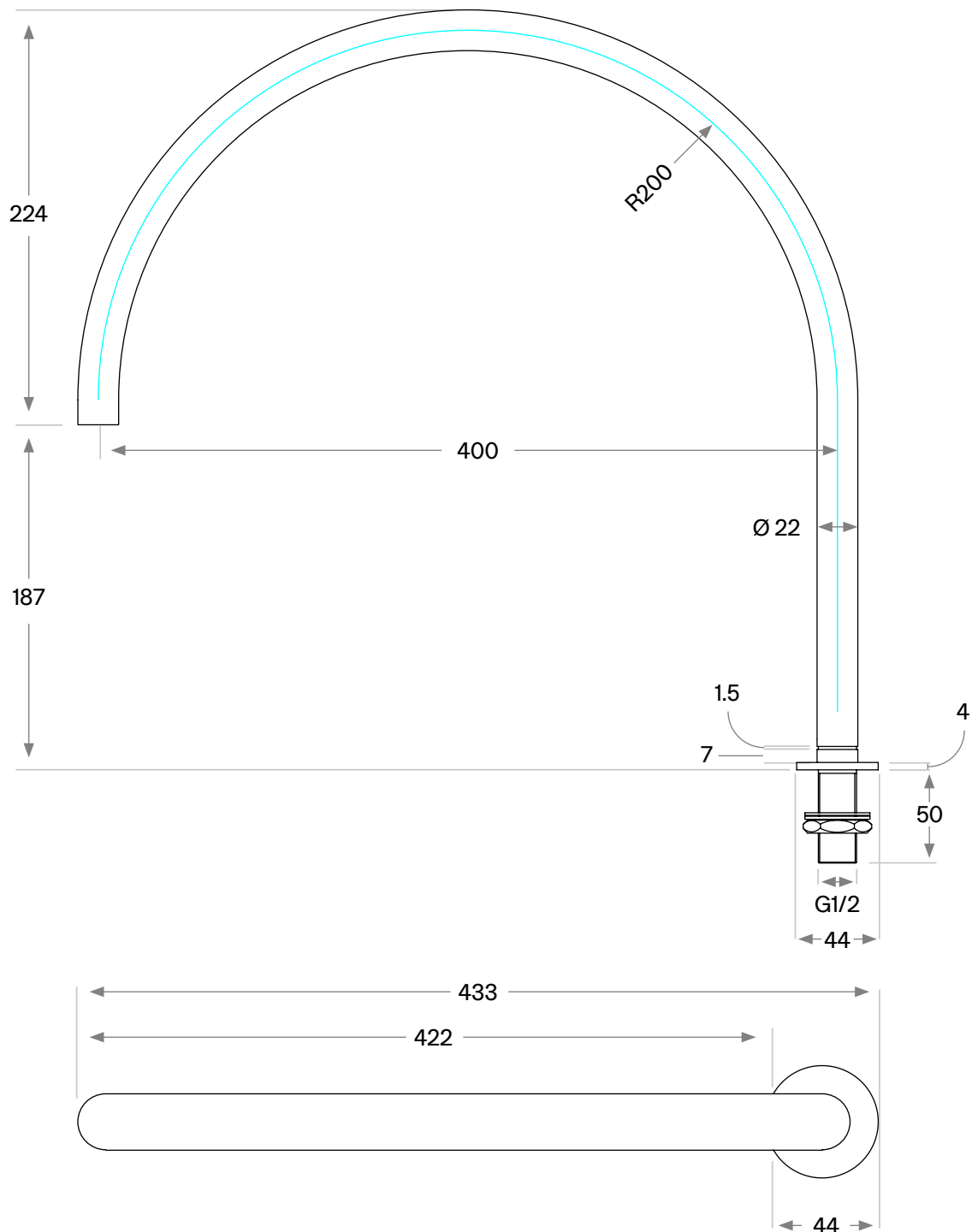


JP 11.4

**Deck mounted swivel spout
with 400mm projection
Designer: John Pawson**

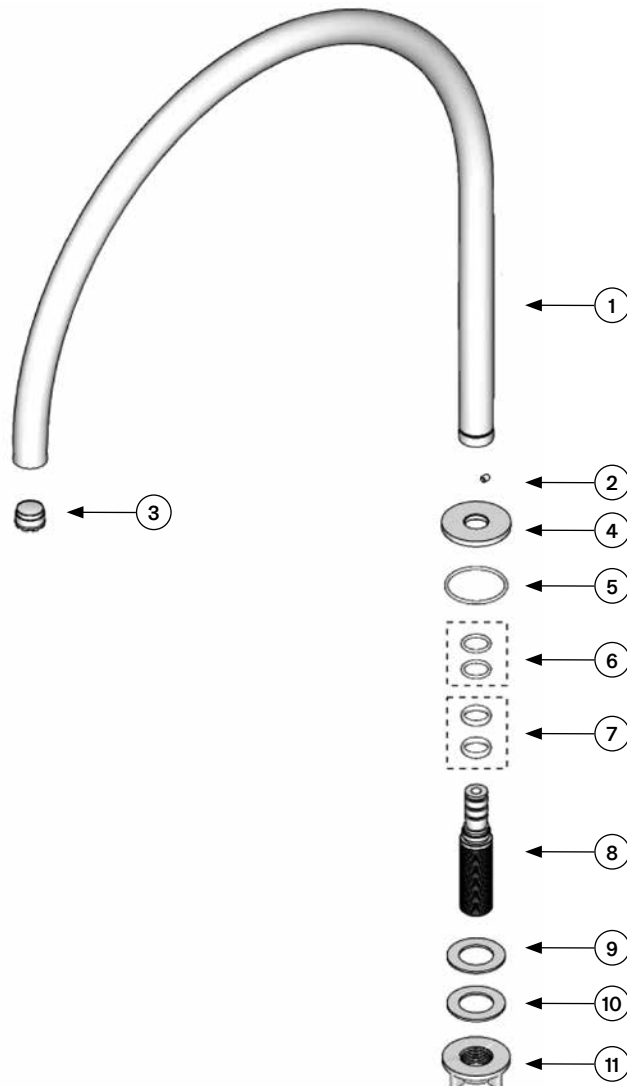


Dimensioned drawing

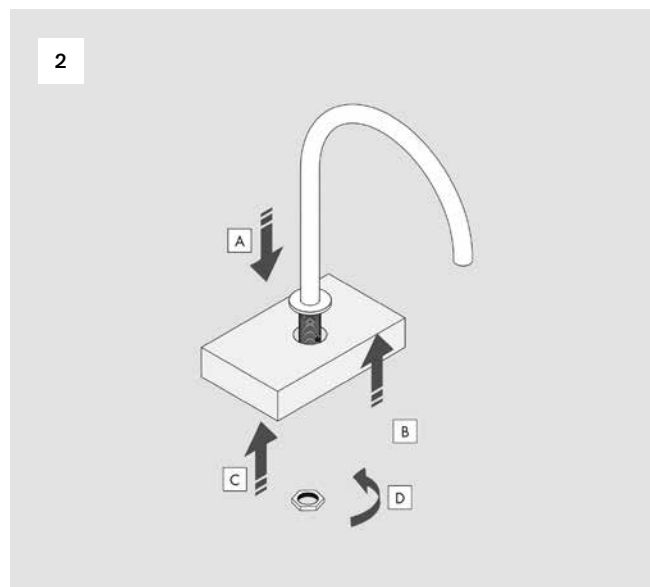
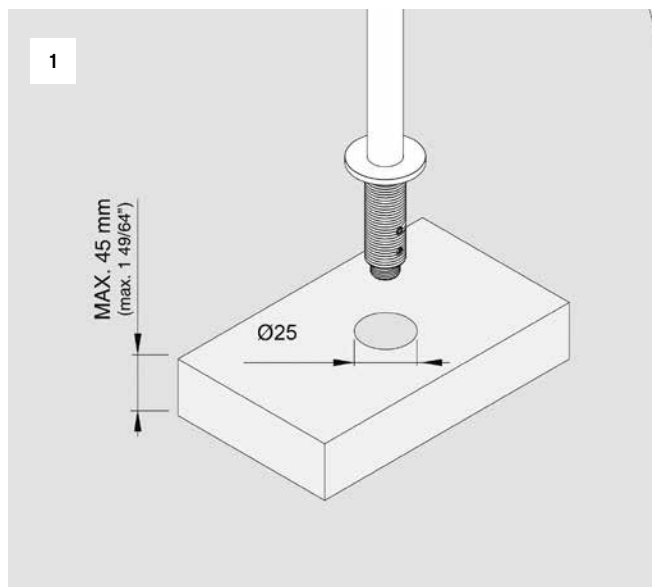


Spare Parts List

Part no	Spare part code	Article No	Description	QTY
1.	JP11.4-001	JP11.4-001.000	Deck mounted spout	1
2.	JP11.4-002	JP11.4-002.000	Pin	1
3.	JP11.4-003	43225101001	Flow regulator M18.5	1
4.	JP11.4-004	JP11.4-004.000	Rosette	1
5.	JP11.4-005	70NBR103F	O ring Ø37 X2	1
6.	JP11.4-006	70NBR103F	O ring Ø10 X2	2
7.	JP11.4-007	JP11.4-007.000	Plastic bushing	2
8.	JP11.4-008	JP11.4-008.000	Inlet connection G½	1
9.	JP11.4-009	70NBR103F	Gasket	1
10.	JP11.4-010	JP11.4-010.000	Metal washer	1
11.	JP11.4-011	JP11.4-011.000	Hex. mounting ring	1



Installation Manual



Operating conditions

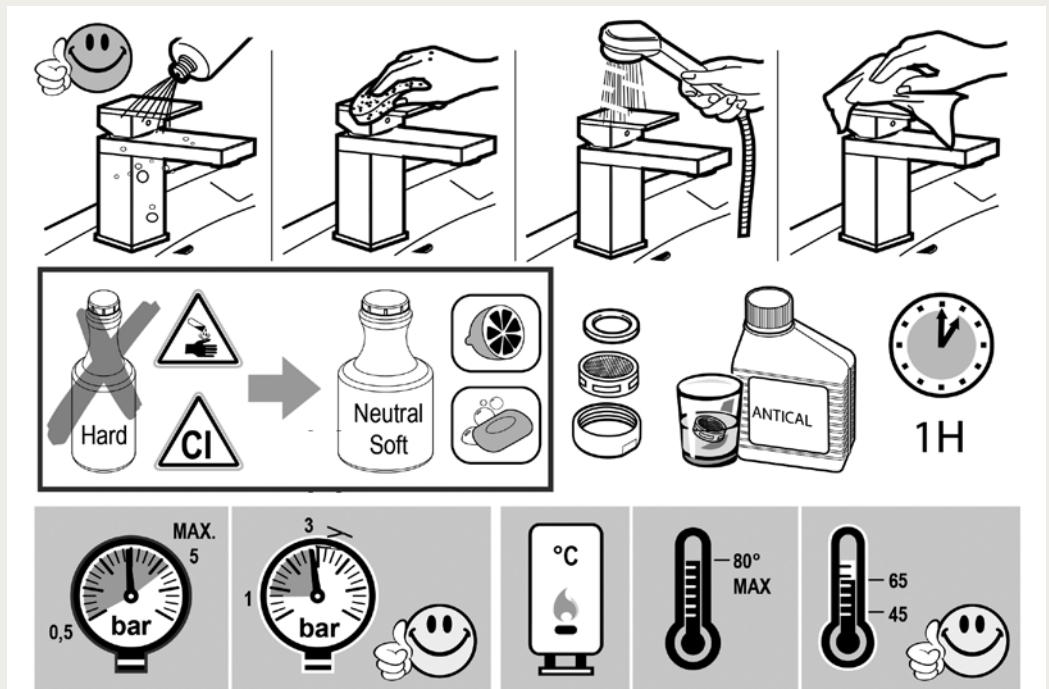
- Recommended flow temperature: $\leq 65^{\circ}\text{C}$
- Maximum flow temperature momentary: $\leq 90^{\circ}\text{C}$
- Minimum flow pressure: 2 bar
- Maximum flow pressure: 5 bar
- Recommended operating pressure: 3 bar
- Test pressure: 10 bar

Attention of the plumber

- The pipes have to be rinsed thoroughly before installation
- Avoid pressure differences between hot / cold water supply
- Use of pressure reducer when static pressure is higher than 5 bar to avoid damage the cartridge

AERATORE IN DOTAZIONE / AERATOR INCLUDED

Aeratore montato / Mounted aerator
5.5 l/min / 1.2 gpm



Please ensure you comply with the following instructions to optimise performance of the mixer:

- All pipework must be thoroughly flushed prior to installation
- For USA installation, please fix the USA NPT adapters on top of the pre-installed water connections
- Always first test the system with water pressure before closing the walls
- Optimal water pressure 3 BAR / temperature should not exceed 65°C/149°F
- Please read all installation instructions carefully

Failure to comply with manufacturers recommendations will void warranty