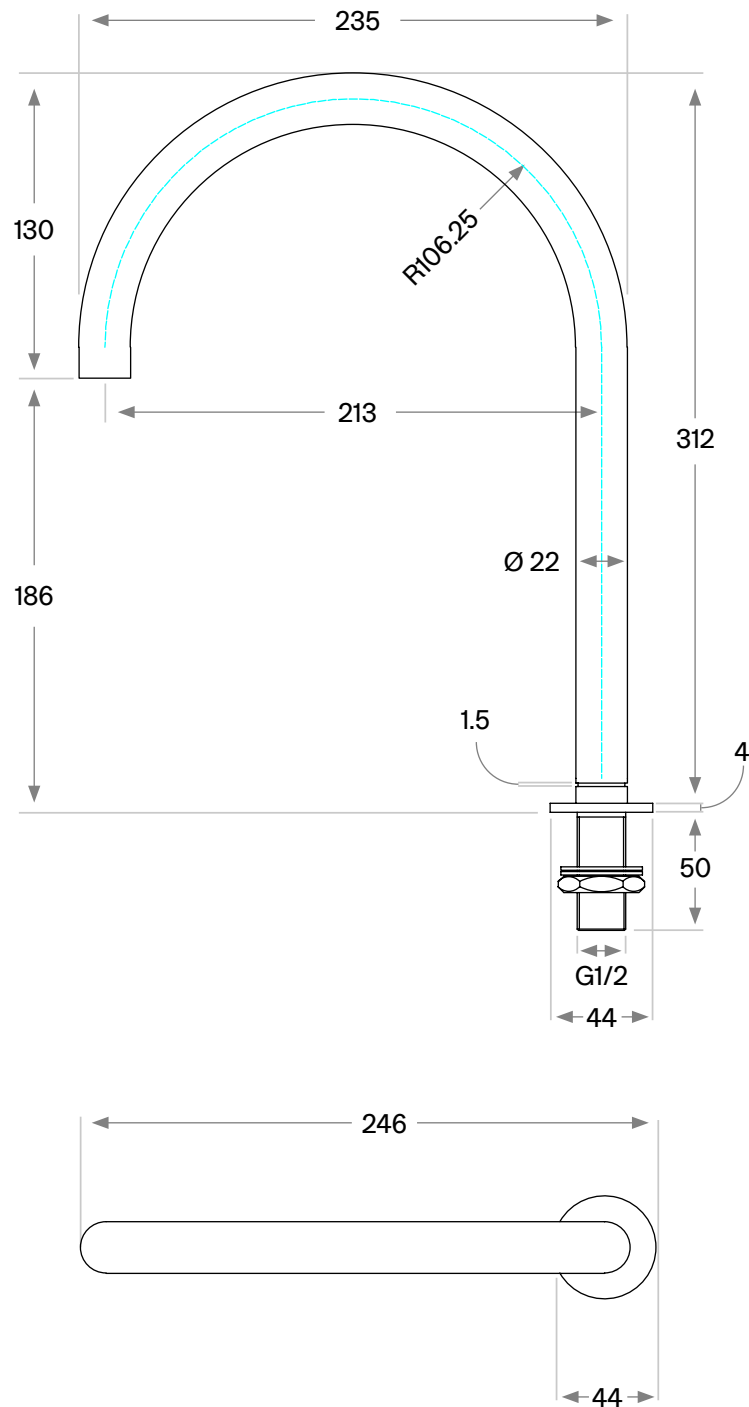


JP 11.2

Deck mounted fixed spout
Designer: John Pawson

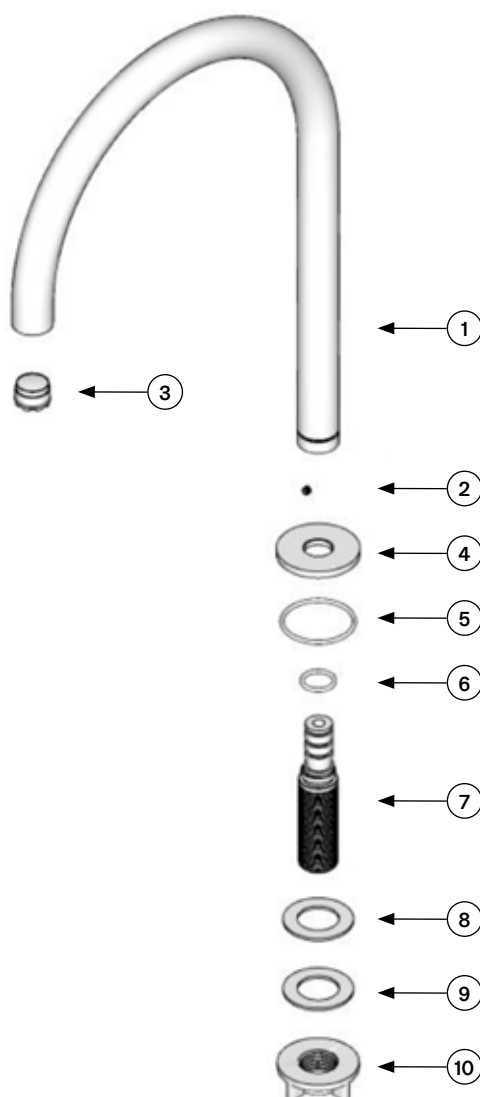


Dimensioned drawing

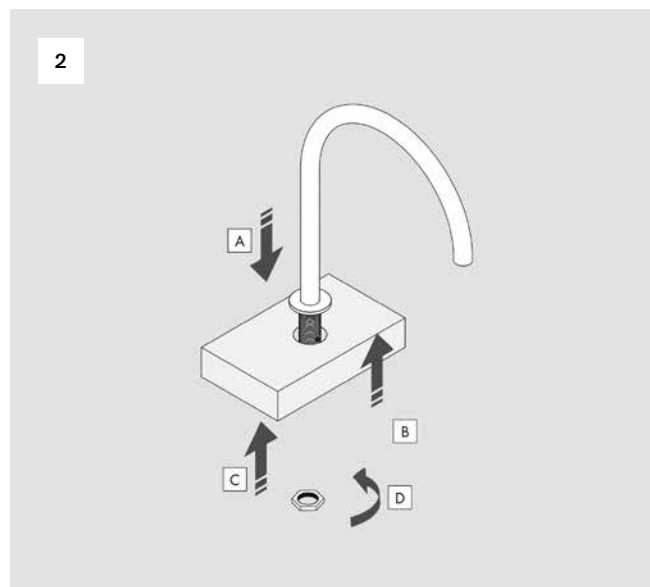
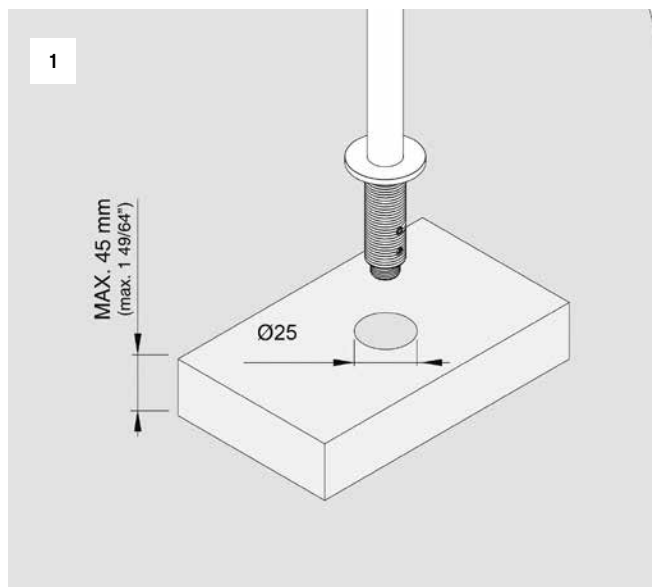


Spare Parts List

Part no	Spare part code	Article No	Description	QTY
1.	JP11.2-001	JP11.2-001.000	Deck mounted spout	1
2.	JP11.2-002	JP11.2-002.000	Pin	1
3.	JP11.2-003	43225101001	Flow regulator M18.5	1
4.	JP11.2-004	JP11.2-004.000	Rosette	1
5.	JP11.2-005	70NBR103F	O ring Ø37 X2	1
6.	JP11.2-006	70NBR103F	O ring Ø10 X2	2
7.	JP11.2-007	JP11.2-007.000	Inlet connection G½	1
8.	JP11.2-008	70NBR103F	Gasket	1
9.	JP11.2-009	JP11.2-009.000	Metal washer	1
10.	JP11.2-010	JP11.2-010.000	Hex. mounting ring	1



Installation Manual



Operating conditions

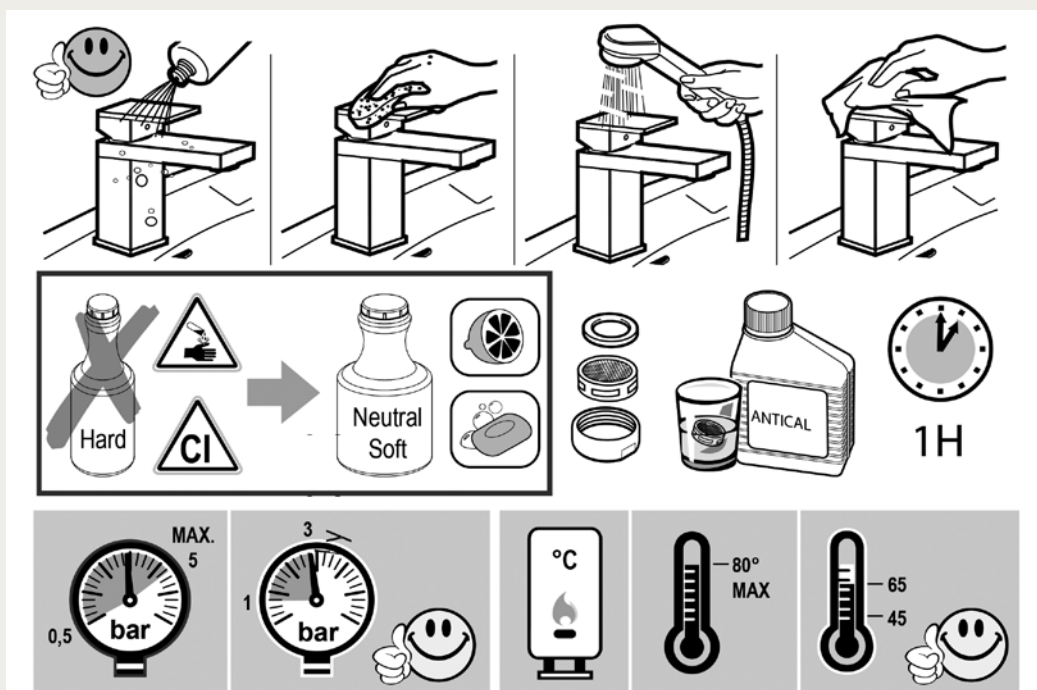
-Recommended flow temperature:	≤65°C
-Maximum flow temperature momentary:	≤90°C
-Minimum flow pressure:	2 bar
-Maximum flow pressure:	5 bar
-Recommended operating pressure:	3 bar
-Test pressure:	10 bar

Attention of the plumber

- The pipes have to be rinsed thoroughly before installation
- Avoid pressure differences between hot / cold water supply
- Use of pressure reducer when static pressure is higher than 5 bar to avoid damage the cartridge

AERATORE IN DOTAZIONE / AERATOR INCLUDED

Aeratore montato / Mounted aerator
5.5 l/min / 1.2 gpm



Please ensure you comply with the following instructions to optimise performance of the mixer:

- All pipework must be thoroughly flushed prior to installation
- For USA installation, please fix the USA NPT adapters on top of the pre-installed water connections
- Always first test the system with water pressure before closing the walls
- Optimal water pressure 3 BAR / temperature should not exceed 65°C/149°F
- Please read all installation instructions carefully

Failure to comply with manufacturers recommendations will void warranty