

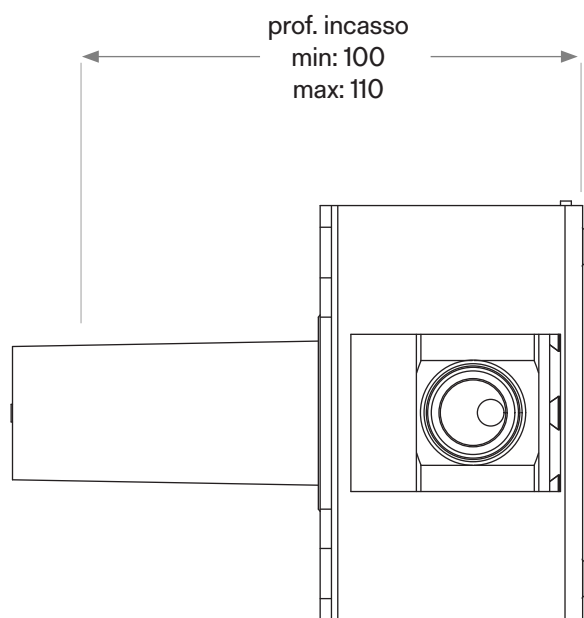
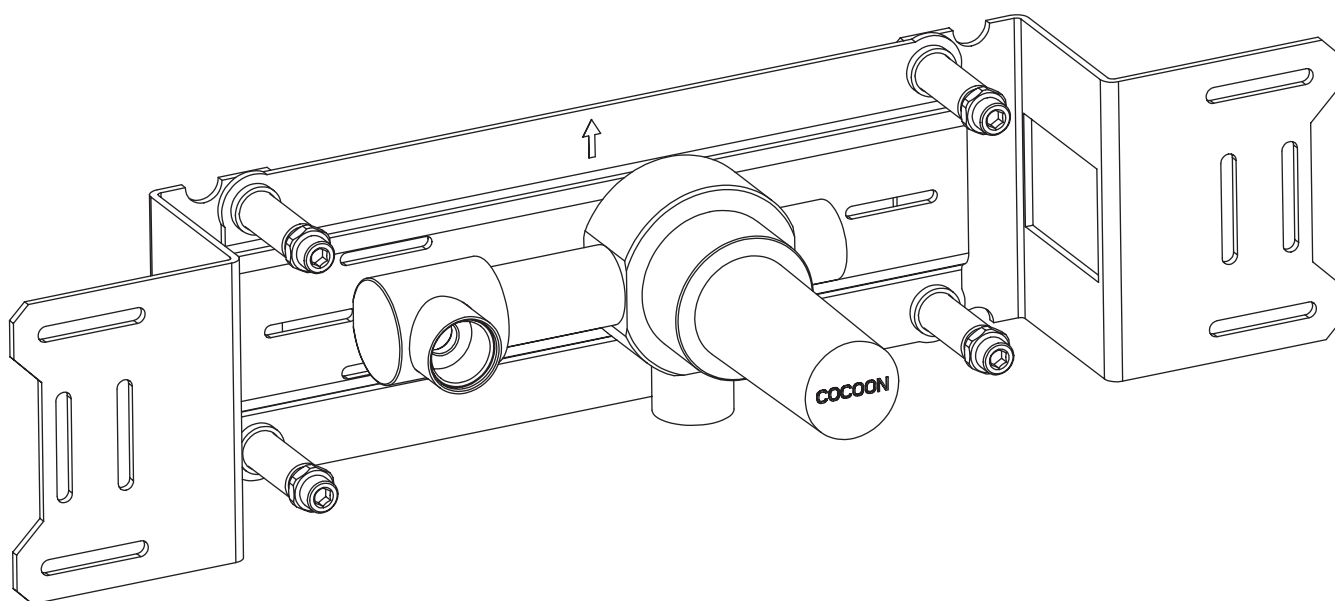
BOX12

**Built-in hydro-progressive mixer
with fixed outlet socket.
Designer: John Pawson**



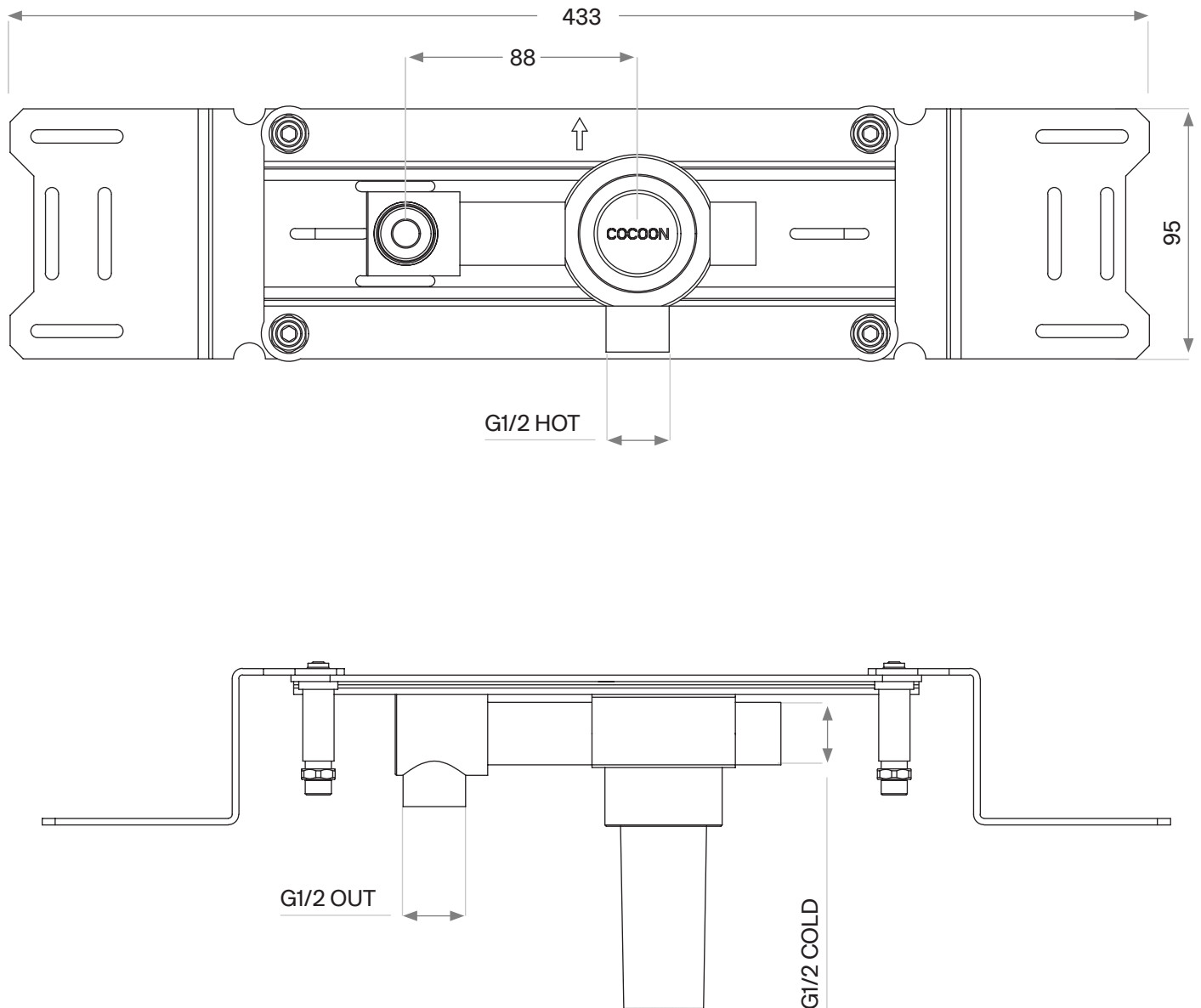
1/2" connection to copper, steel, iron or pex pipe work

Dimensioned drawing 1/2



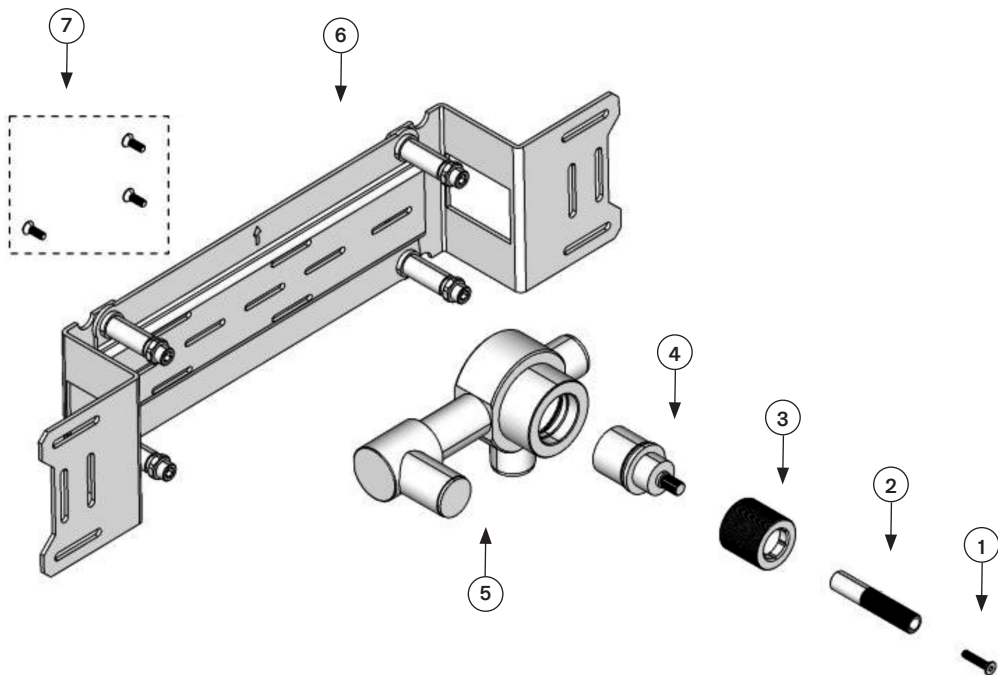
1/2" connection to copper, steel, iron or pex pipe work

Dimensioned drawing 2/2

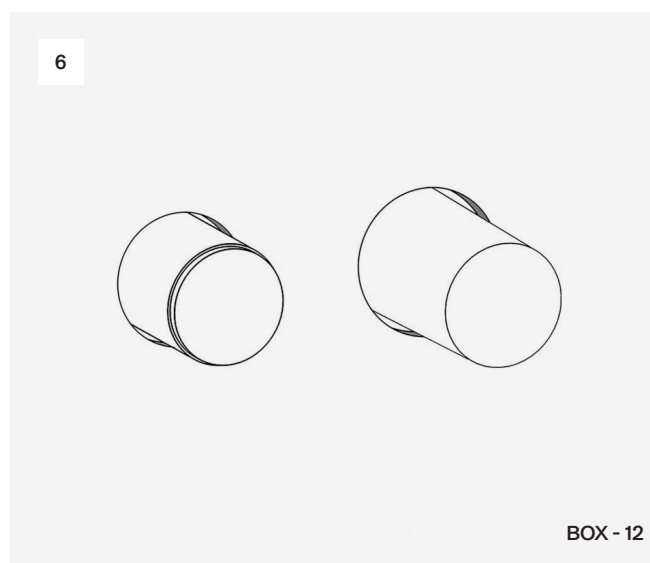
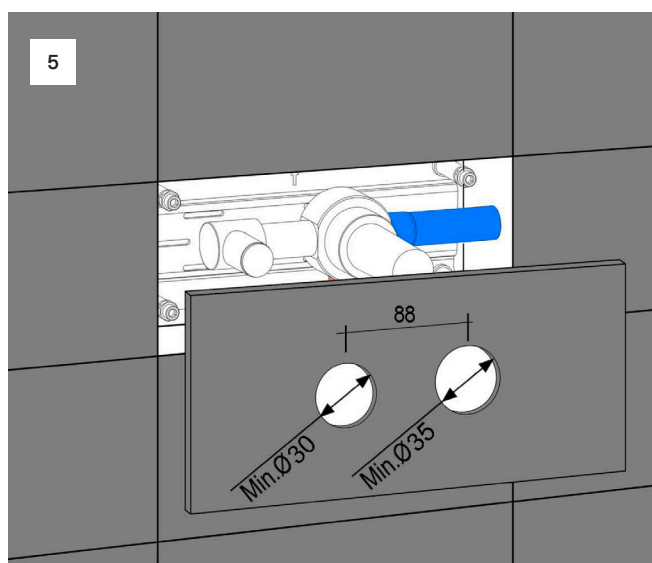
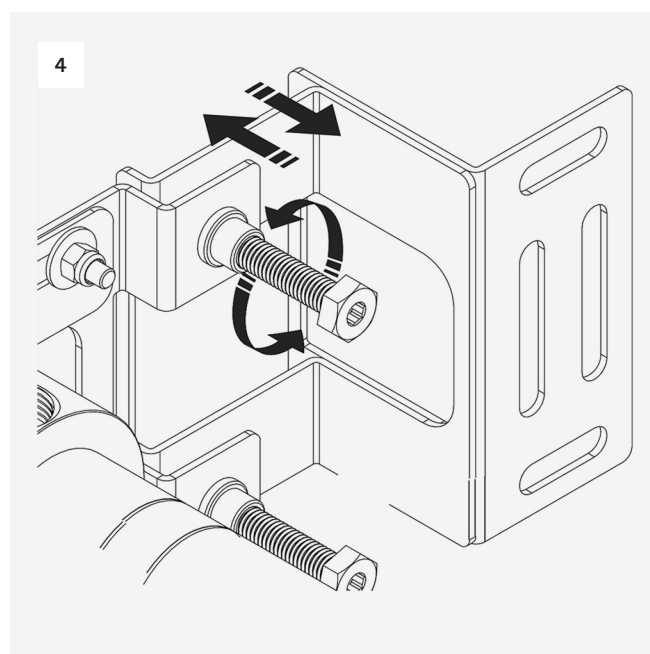
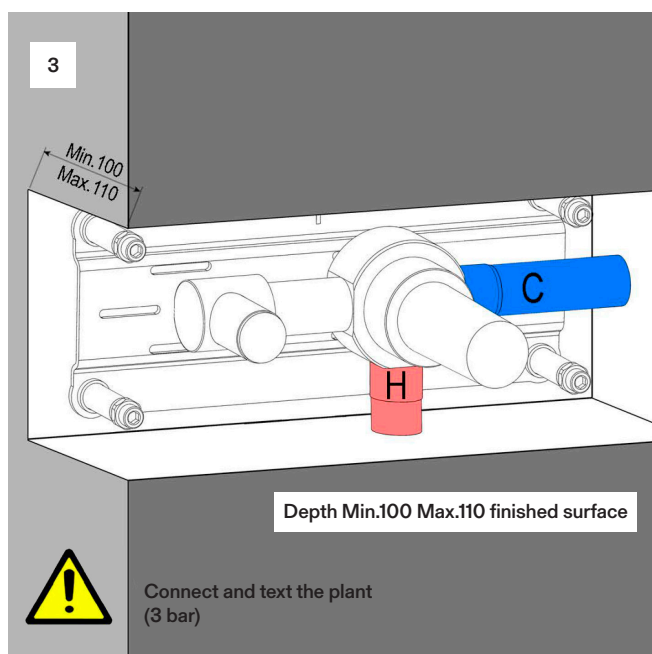
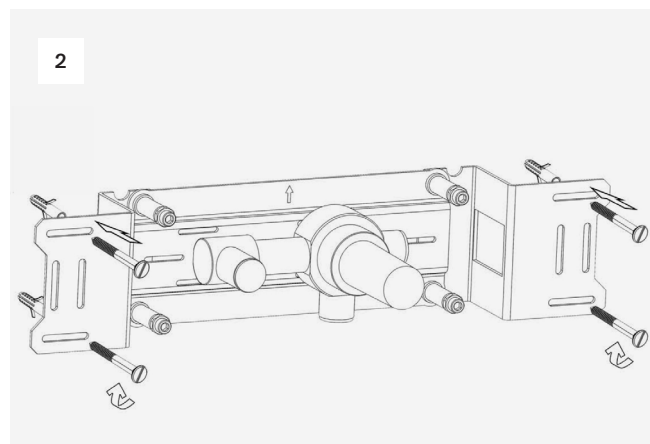
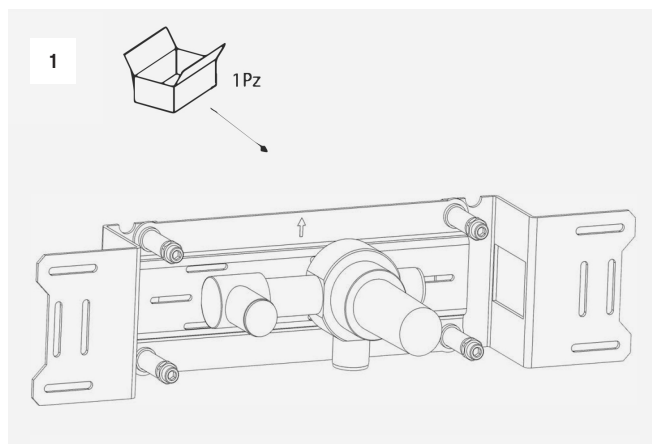


Spare Parts List

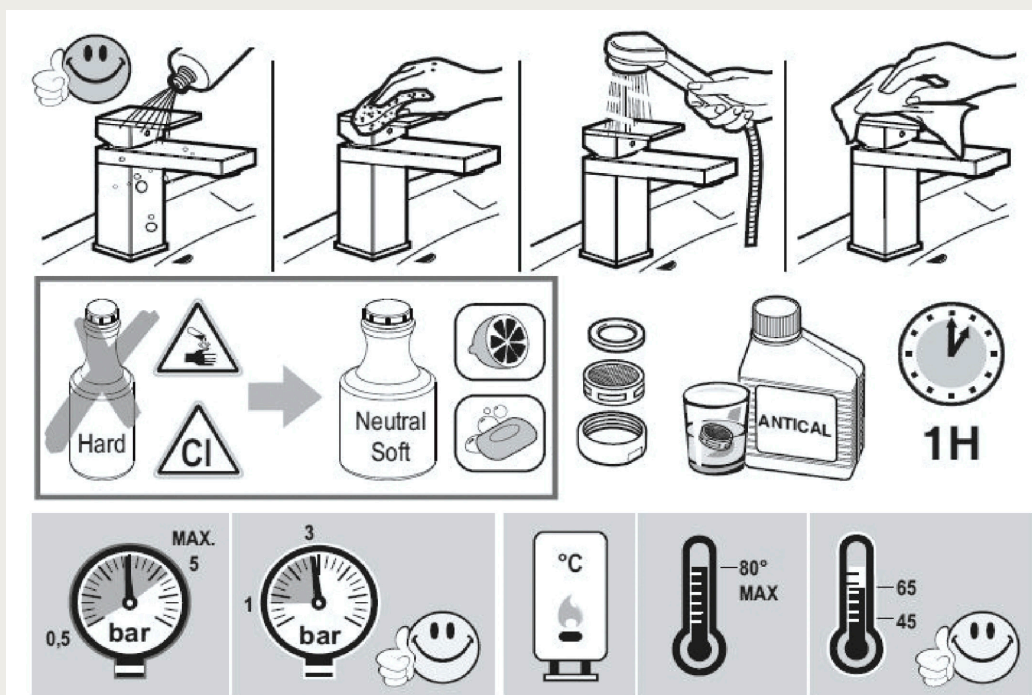
Part no	Spare part code	Article No	Description	QTY
1.	BOX12-001	BOX12-001.000	Grub Screw	1
2.	BOX12-002	BOX12-002.000	Spindle connection	1
3.	BOX12-003	BOX12-003.000	Valve housing	1
4.	BOX12-004	BF12084	Progressive cartridge	1
5.	BOX12-005	BOX12-005.000	Built-in body	1
6.	BOX12-006	BOX12-006.000	Mounting frame	1
7.	BOX12-007	BOX12-007.000	Screw M6	3



Installation Manual



BOX - 12



Please ensure you comply with the following instructions to optimise performance of the mixer:

- All pipework must be thoroughly flushed prior to installation
- For USA installation, please fix the USA NPT adapters on top of the pre-installed water connections
- Always first test the system with water pressure before closing the walls
- Optimal water pressure 3 BAR / temperature should not exceed 65°C/149°F
- Please read all installation instructions carefully

Failure to comply with manufacturers recommendations will void warranty