

BOX11

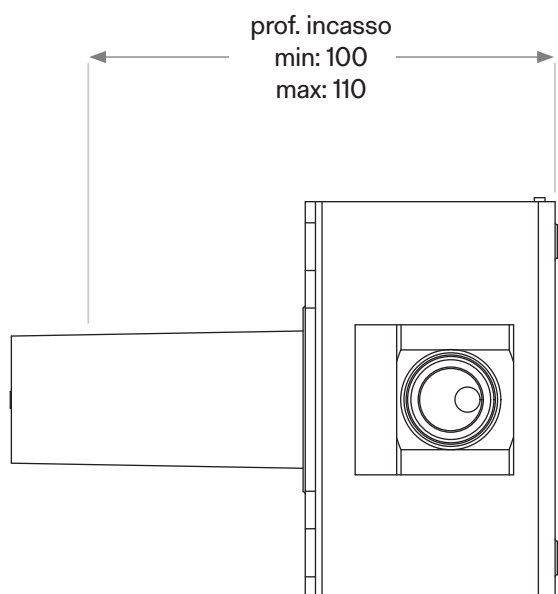
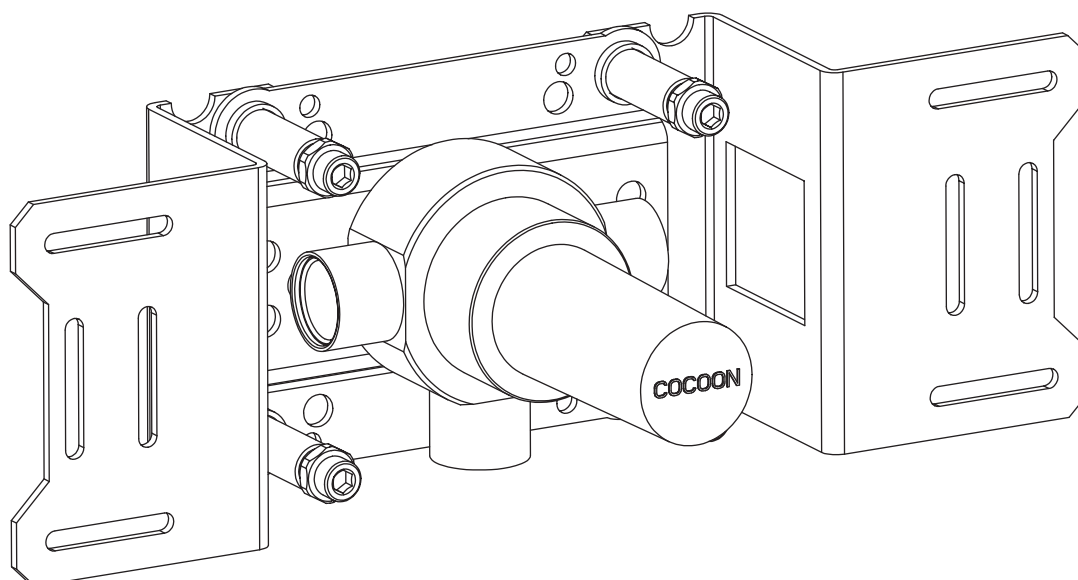
Built-in hydro-progressive mixer
Designer: John Pawson



COCOON

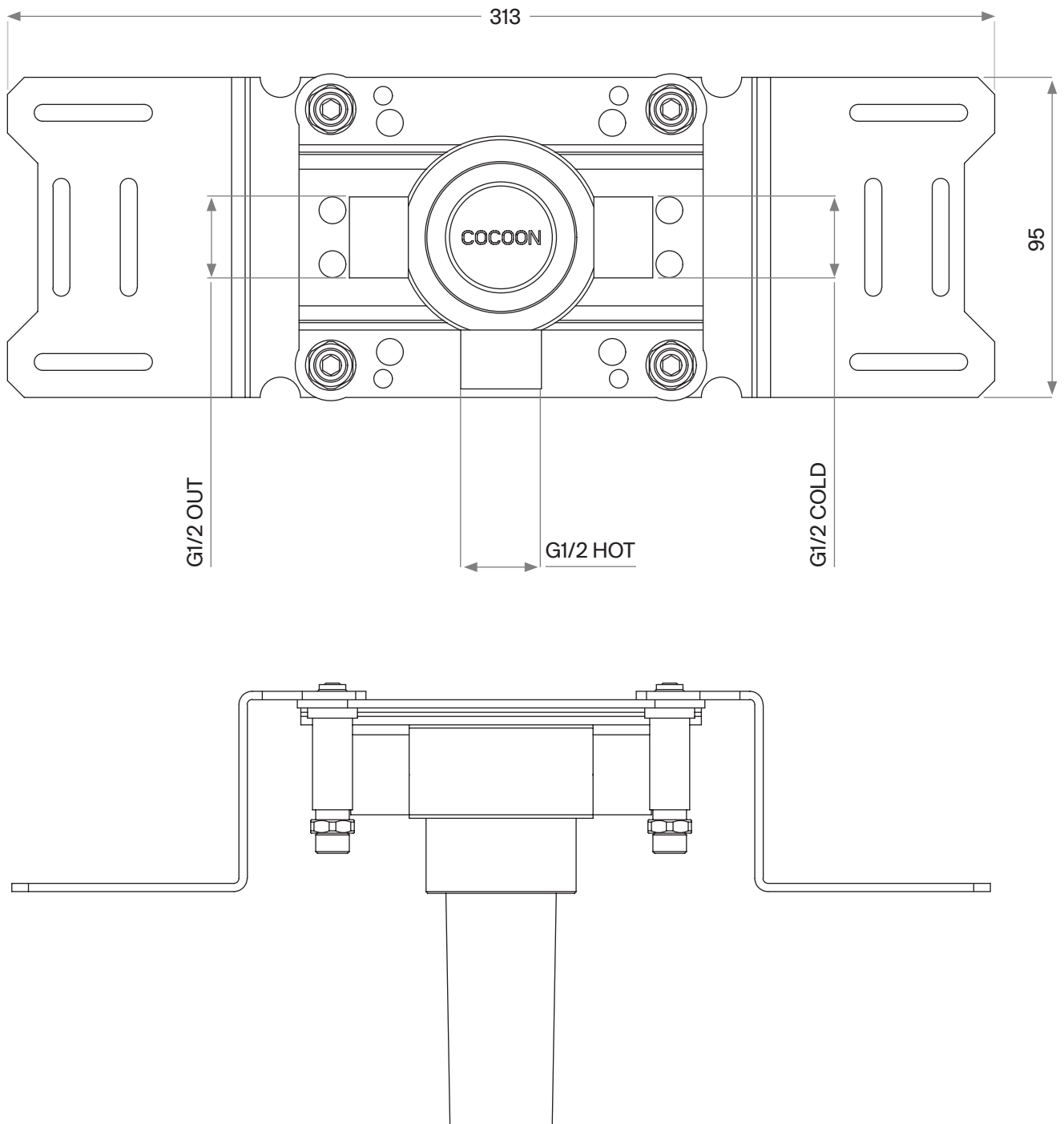
1/2" connection to copper, steel, iron or pex pipe work.

Dimensioned drawing 1/2



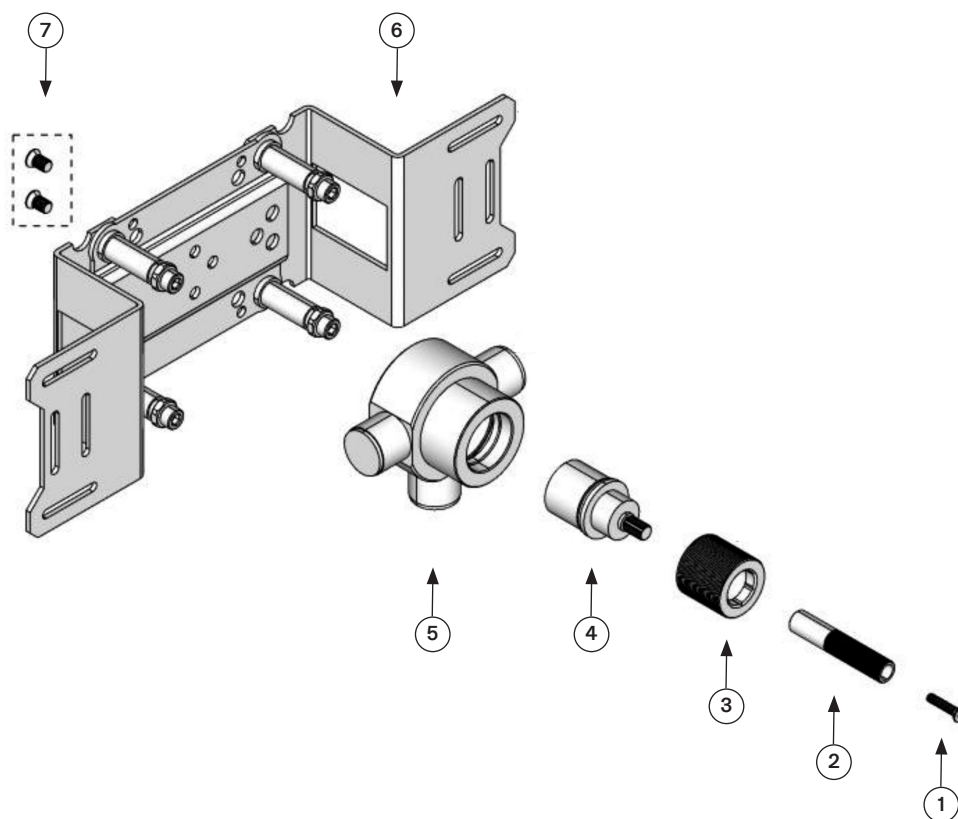
1/2" connection to copper, steel, iron or pex pipe work.

Dimensioned drawing 2/2

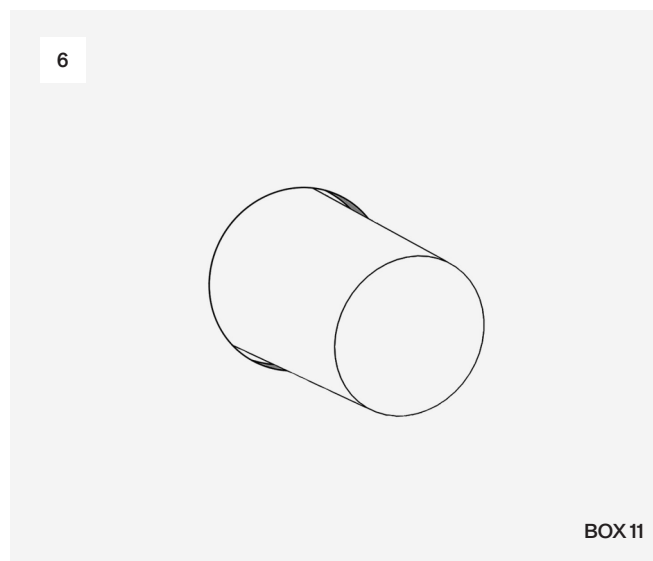
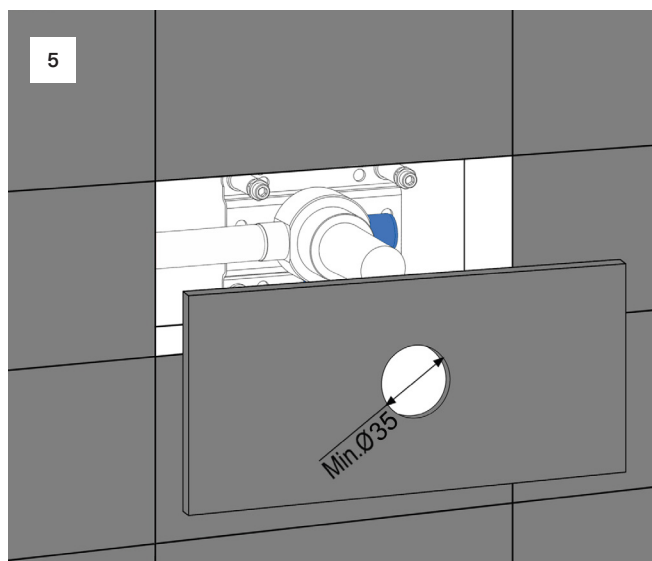
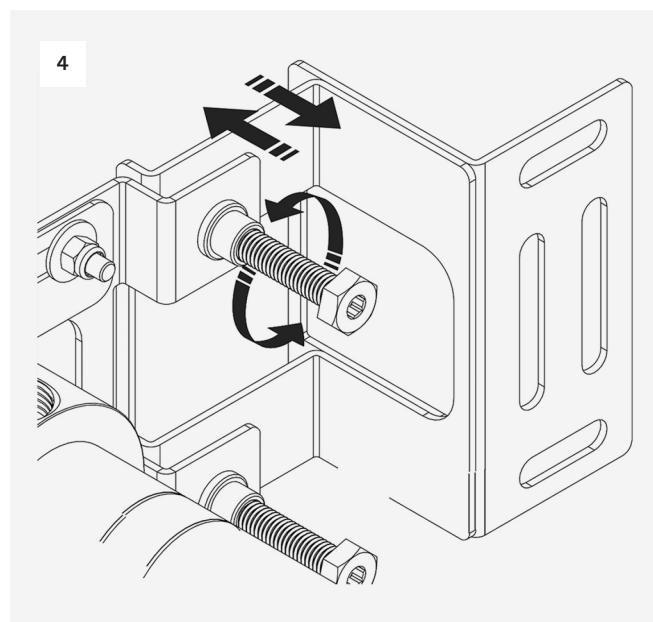
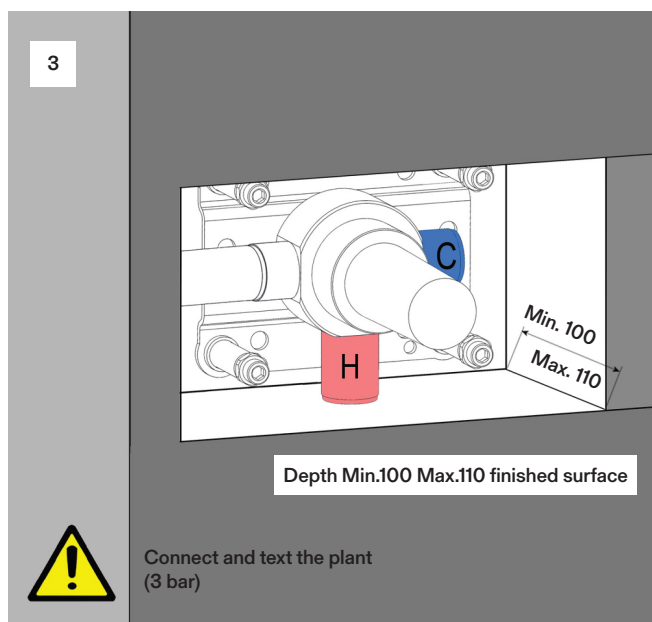
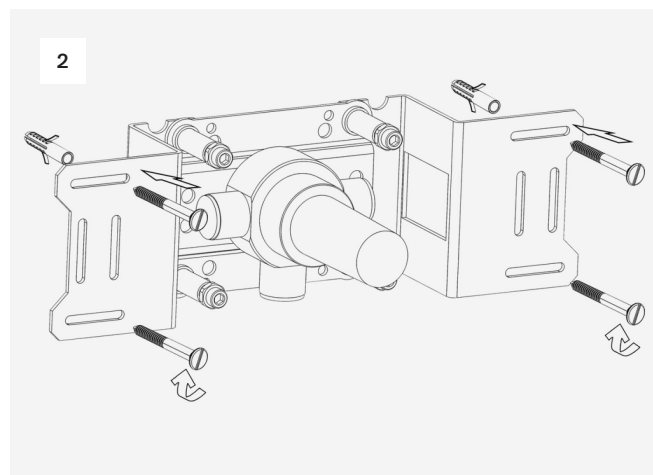
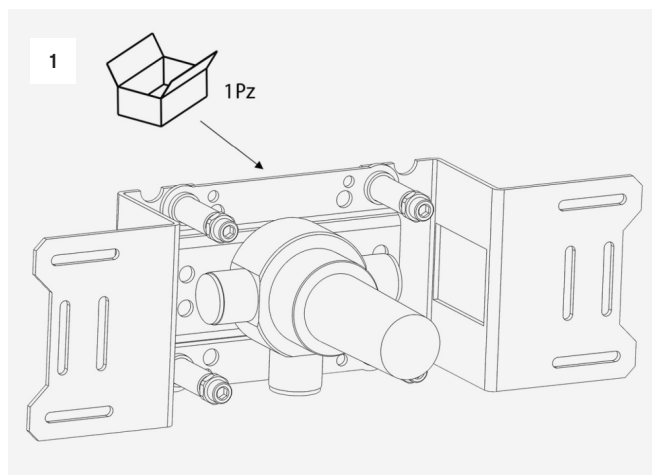


Spare Parts List

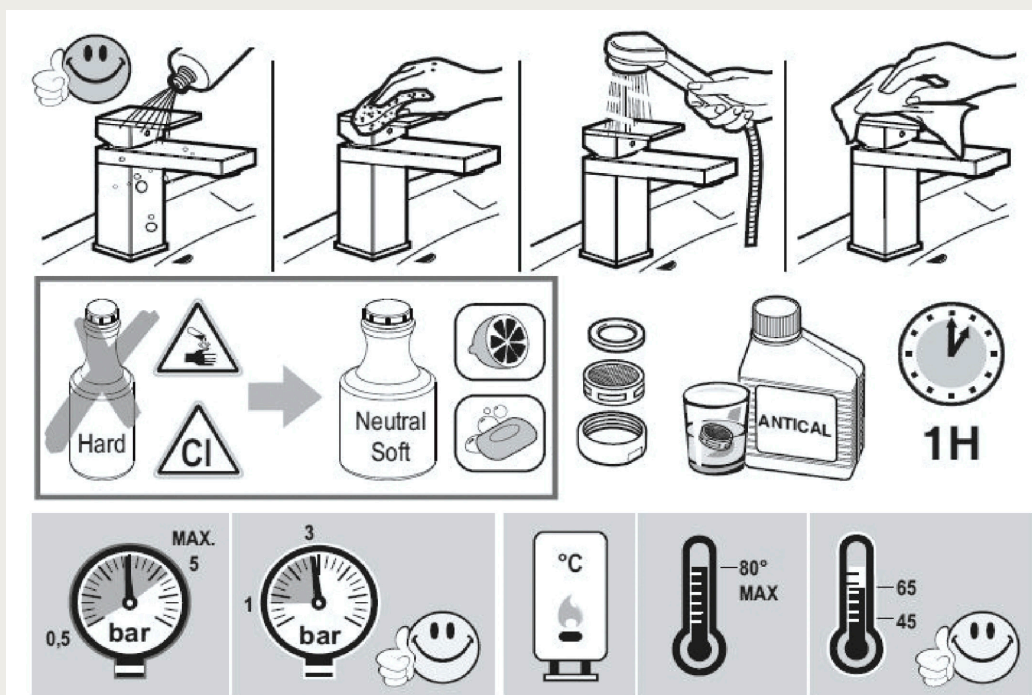
Part no	Spare part code	Article No	Description	QTY
1.	BOX11-001	BOX11-001.000	Grub Screw	1
2.	BOX11-002	BOX11-002.000	Spindle connection	1
3.	BOX11-003	BOX11-003.000	Valve housing	1
4.	BOX11-004	BF12084	Progressive cartridge	1
5.	BOX11-005	BOX11-005.000	Built-in body	1
6.	BOX11-006	BOX11-006.000	Mounting frame	1
7.	BOX11-007	BOX11-007.000	Screw M6	2



Installation Manual



BOX11



Please ensure you comply with the following instructions to optimise performance of the mixer:

- All pipework must be thoroughly flushed prior to installation
- For USA installation, please fix the USA NPT adapters on top of the pre-installed water connections
- Always first test the system with water pressure before closing the walls
- Optimal water pressure 3 BAR / temperature should not exceed 65°C/149°F
- Please read all installation instructions carefully

Failure to comply with manufacturers recommendations will void warranty