

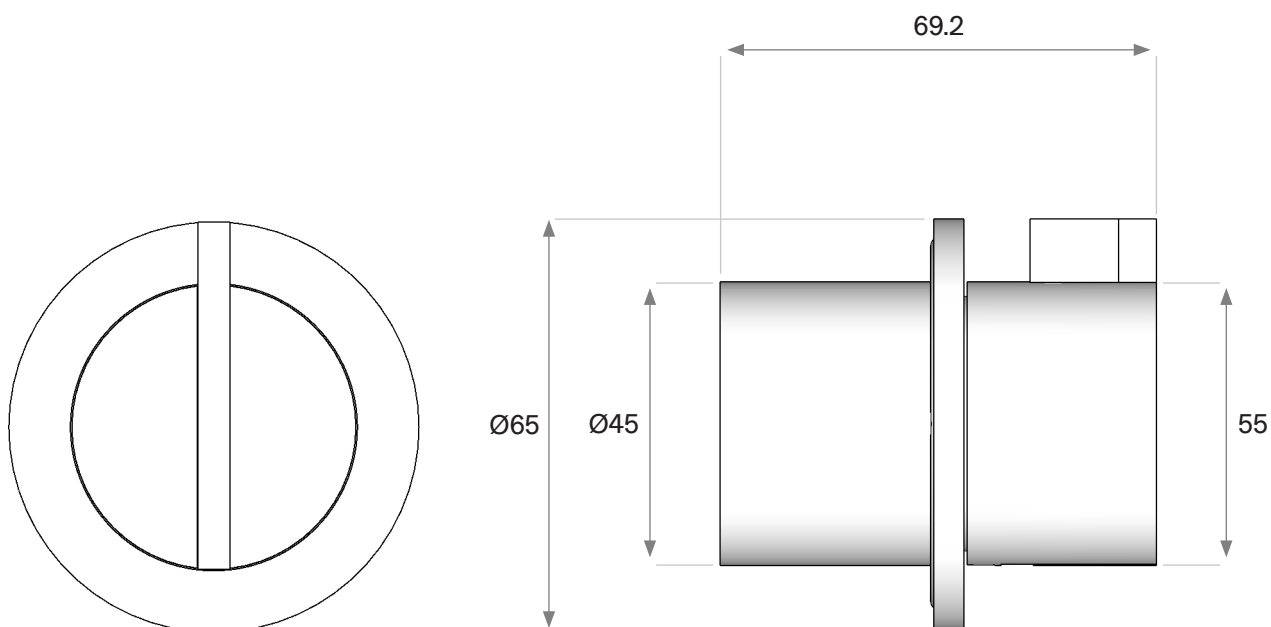
PB 01-THERM-EXT-2020

Wall mounted thermostatic mixer
Exposed trim parts
Designer: Piet Boon



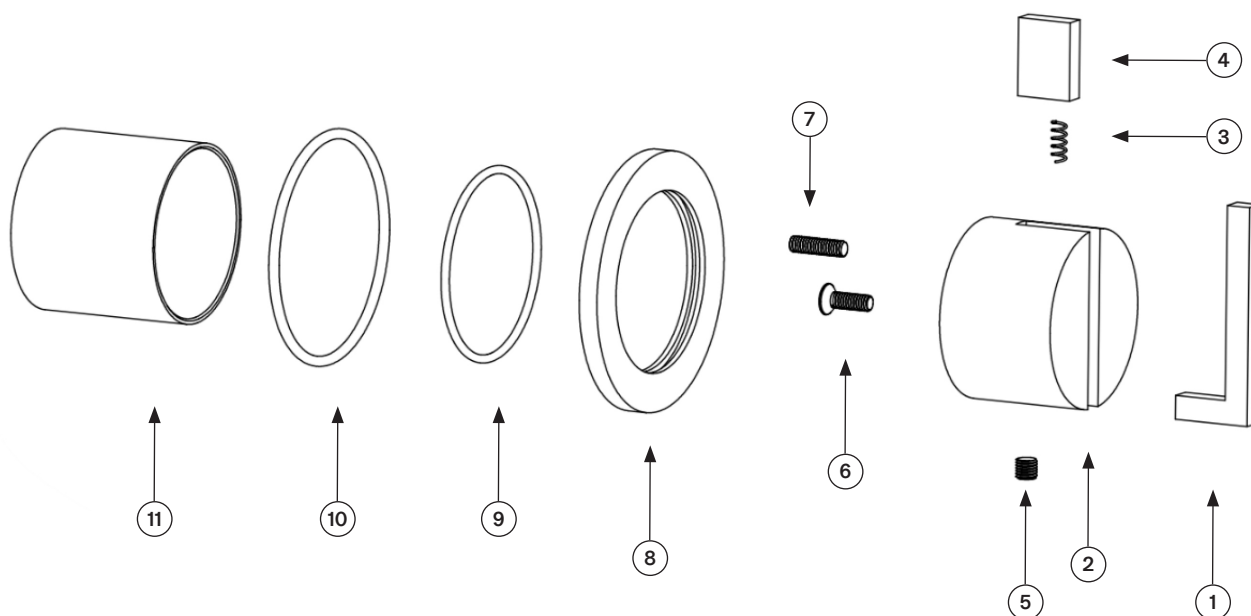
COCOON

Dimensioned drawing

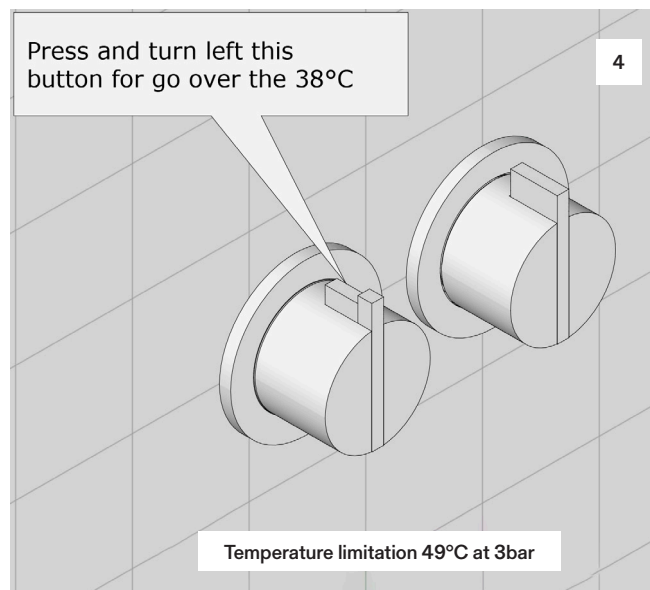
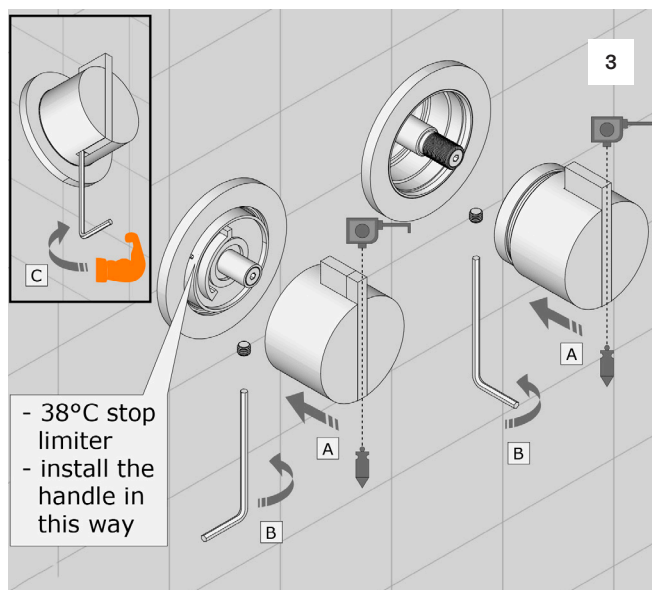
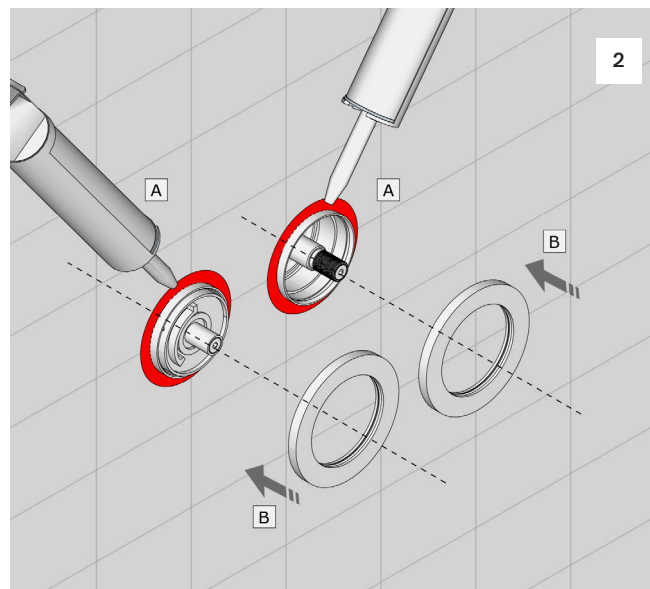
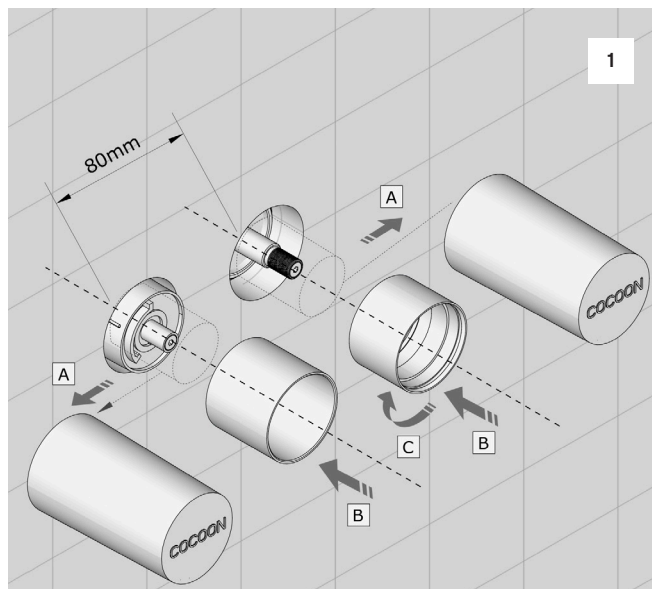


Spare Parts List

Part no	Spare part code	Article No	Description	QTY
1.	PB01THERM-EXT-001	PB01THERM-EXT-001.000	Lever rod	1
2.	PB01THERM-EXT-002	PB01THERM-EXT-002.000	Handle cap	1
3.	PB01THERM-EXT-003	PB01THERM-EXT-003.000	Spring	1
4.	PB01THERM-EXT-004	PB01THERM-EXT-004.000	Safety button	1
5.	PB01THERM-EXT-005	PB01THERM-EXT-005.000	Pin	1
6.	PB01THERM-EXT-006	PB01THERM-EXT-006.000	Screw	1
7.	PB01THERM-EXT-007	PB01THERM-EXT-007.000	Pin	1
8.	PB01THERM-EXT-008	PB01THERM-EXT-008.000	Rosette	1
9.	PB01THERM-EXT-009	70NBR103F	O ring Ø49	1
10.	PB01THERM-EXT-010	70NBR103F	O ring Ø59	1
11.	PB01THERM-EXT-011	PB01THERM-EXT-011.000	Sleeve ring	1



Installation Manual



Operating conditions

-Recommended flow temperature	≤65°C
-Maximum flow temperature momentary	≤90°C
-Minimum flow pressure	2 bar
-Maximum flow pressure	5 bar
-Recommended operating pressure	3 bar
-Test pressure	10 bar

Technical Warnings

The pipes have to be rinsed thoroughly before installation.

Avoid pressure differences between hot / cold water supply.

Use of pressure reducer when static pressure is higher than 5 bar to avoid damage the cartridge.